

Republic County Data
and Information
June 2005

Produced by

office of
Local Government
K-State Research and Extension

and



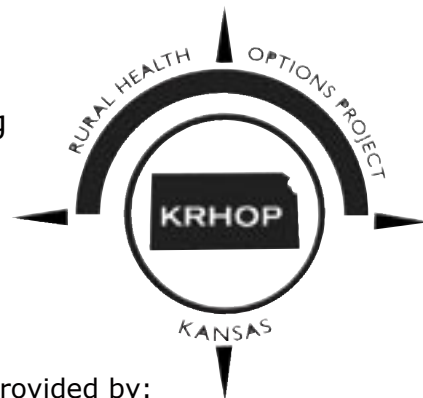
Aaron K. Lusby
Extension Associate

with assistance from
Sarah Coover
Student Assistant

John Leatherman, Director

In cooperation with:

Republic County
Health Care Steering
Committee



Funding for this report provided by:
Office of Rural Health Policy
Health Resources and Services Administration
(Grant# 5 H54 RH 00009 - 3)

Republic County Data and Information

The organization and delivery of health care services have undergone rapid evolution in recent years. For many Americans, the cost of services and access to care are important issues. This certainly applies to many rural areas where communities have struggled to maintain affordable, quality health care systems. As economic forces and technical advances continue to change health care, it is more important than ever for rural community leaders and health care providers to work together to ensure affordable, sustainable health care systems.

In an effort to provide useful information resources to rural community and health care leaders, the Kansas Rural Health Options Project (KRHOP) has teamed with the Office of Local Government, a unit of the Department of Agricultural Economics and K-State Research and Extension, to develop this report as a component of the Kansas Rural Health Works program. KRHOP is a partnership of the Office of Local and Rural Health at the Kansas Department of Health and Environment, the Kansas Hospital Association, the Kansas Board of Emergency Medical Services and the Kansas Medical Society. KRHOP is dedicated to assuring quality health care delivery in rural Kansas through the promotion of collaborative systems of care. Kansas Rural Health Works is supported by a federal grant to KRHOP (No. 5 H54 RH 00009-03) from the Health Resources and Services Administration, Office of Rural Health Policy.

This report presents a variety of information about Republic County and its health care system. It includes demographic, economic, health and medical data, as well as statistics on traffic and crime specific to the county. When available, county statistics are compared with state statistics. It presents a current picture of the county, and also provides some insight on the county's future.

The Office of Local Government welcomes any questions, comments or suggestions about this report or any of their other services. Contact your county Extension office or:

Dr. Aaron K. Lusby
Office of Local Government
Department of Agricultural Economics
K-State Research and Extension
Manhattan, KS 66506-3415

Phone: 785-532-2643
10E Umberger Hall
Fax: 785-532-3093
Email: alusby@agecon.ksu.edu

Table of Contents

Republic County Data and Information	1
Economic Data	3
Population	4
Income.....	6
Employment.....	12
Health and Behavioral Data	14
Birth, Infant Mortality, Childhood Deaths, and Maternity Statistics.....	16
Hospital Data	18
Education	20
Traffic	24
Crime	27

Republic County Data and Information

Demographics and Economics

The first section of the report covers demographic and economic information. Republic County's estimated current population is 5,084 people. This represents an almost 22 percent decline in population since the 1990 U.S. Census. Belleville, the largest city in the county, has seen a 24 percent decline in population since 1990. During the same time period, Narka has seen the largest population decline, while Scandia has had the lowest population decline. Data from the Kansas Water Office indicate that Republic County will see a continued decline in population through 2040, when the population projection is 4,606 people. Additionally, 98 percent of the population is white. Females outnumber males in Republic County, especially among the age groups 65 and older.

In terms of income, the average household will have an estimated \$43,055 in income in 2005, and the estimated annual income per person is \$19,620. From 1996 through 2002, per capita income in Kansas remained relatively stable, while per capita income in Republic County declined from almost \$25,500 in 1996 to almost \$21,000 in 2002. Per capita income in the county has also been lower than per capita income for the state as a whole. Transfer payments, such as government payments for health care and social security, taken as a percentage of total individual income, have risen in Republic County since 1993. The percent of total county population who live below the poverty level fell during the period from 1997 through 2000, and has climbed only slightly through 2002. This trend matches that of the state, though as a whole, the state has a lower percent of population below the poverty level. From 1993 through 2003, unemployment rates have risen in Republic County and in Kansas, with unemployment rates lower in Republic County. Tables 4, 5, and 6 have greater detail on sources and levels of income and employment in Republic County.

Health and Behavior

The second section of the report deals with health and behavioral information. The number of families served by state and Medicaid funded services, such as Temporary Assistance for Families and Food Assistance, has increased in Republic County. The number of nursing home beds has declined, while nursing home occupancy rates have increased.

Part of this section is devoted to child and teen health. The latest data is from 2003. Republic County saw a 13 percent decrease in the rate of substantiated cases of child abuse and neglect and also saw a 19 percent reduction in the rate of juvenile court filings. Births to school-aged mothers and low birth weight babies increased in 2003. Republic County did see an increase in the rate of births with adequate or better prenatal care.

Statistics from the Kansas Hospital Association show that most people who used Republic County Hospital between March of 2003 and October of 2004 came from within Republic County, though 25 percent came from outside the county, and three percent came from Nebraska. Conversely, 23 percent of hospital users in Republic County visited hospitals outside Republic County.

Education

Republic County has three school districts: Hillcrest Rural Schools (USD 455), Pike Valley (USD 426), and Republic County (USD 427). Total county enrollment in the school system has decreased from almost 1,150 students in 1994-1995 to approximately 850 students at the beginning of 2004-2005. Incidents of student-on-student violence have also decreased over time.

Traffic

In 2003, the latest available data, Republic County had 241 total traffic accidents, or a rate of 45.3 accidents per 1,000 people, compared to 27.5 accidents per 1,000 people in Kansas. Only 2 of the Republic County accidents were fatal, while 39 involved an injury and 200 involved property damage. Deer-involved accidents occurred in Republic County at a rate of 21.8 accidents per 1,000 people, while deer-related accidents in Kansas as a whole occurred at a rate of 3.3 per 1,000 population. Five accidents in Republic County involved alcohol. In 80.7 percent of accidents, restraints were in use, compared to 83.7 percent for the state. Crash fatalities in Republic County declined between 1999 and 2003 as did crashes with injury.

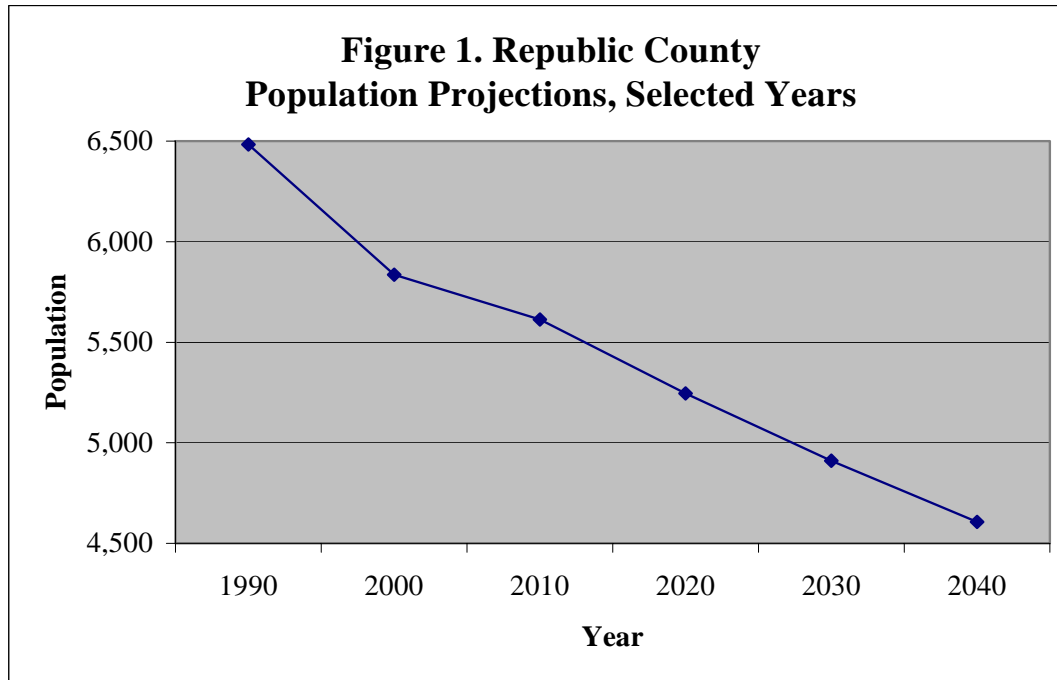
Crime

The final section of the report looks at crime statistics for Republic County. Arrests for crime index offenses, which include murder, rape, robbery, aggravated assault, burglary, larceny and motor vehicle theft, increased between 1991 and 2003. The state of Kansas also experienced an increase in crime index arrests during that time period. Between 1997 and 2003, the number of full-time law enforcement officials increased, such that Republic County has just more than three officials per 1,000 people, while the state has almost four officials per 1,000 people.

Summary

Republic County faces a declining population base. Per capita incomes have declined, and unemployment rates have risen. Use of Medicaid funded services has increased, and the number of nursing home beds has declined, though nursing home occupancy rates have increased. Births to school-aged mothers have increased, as have the number of low weight births, but the number of babies receiving at least adequate prenatal care has increased. Enrollments in the school system have declined as the county population has declined. The county has a higher rate of automobile accidents than the state, and many of these accidents involve deer. Arrests for crime index offenses have risen, as the number of law enforcement officers has risen.

Economic Data



Kansas Water Office (2003)

Table 1. Population Estimates for Republic County, 2005

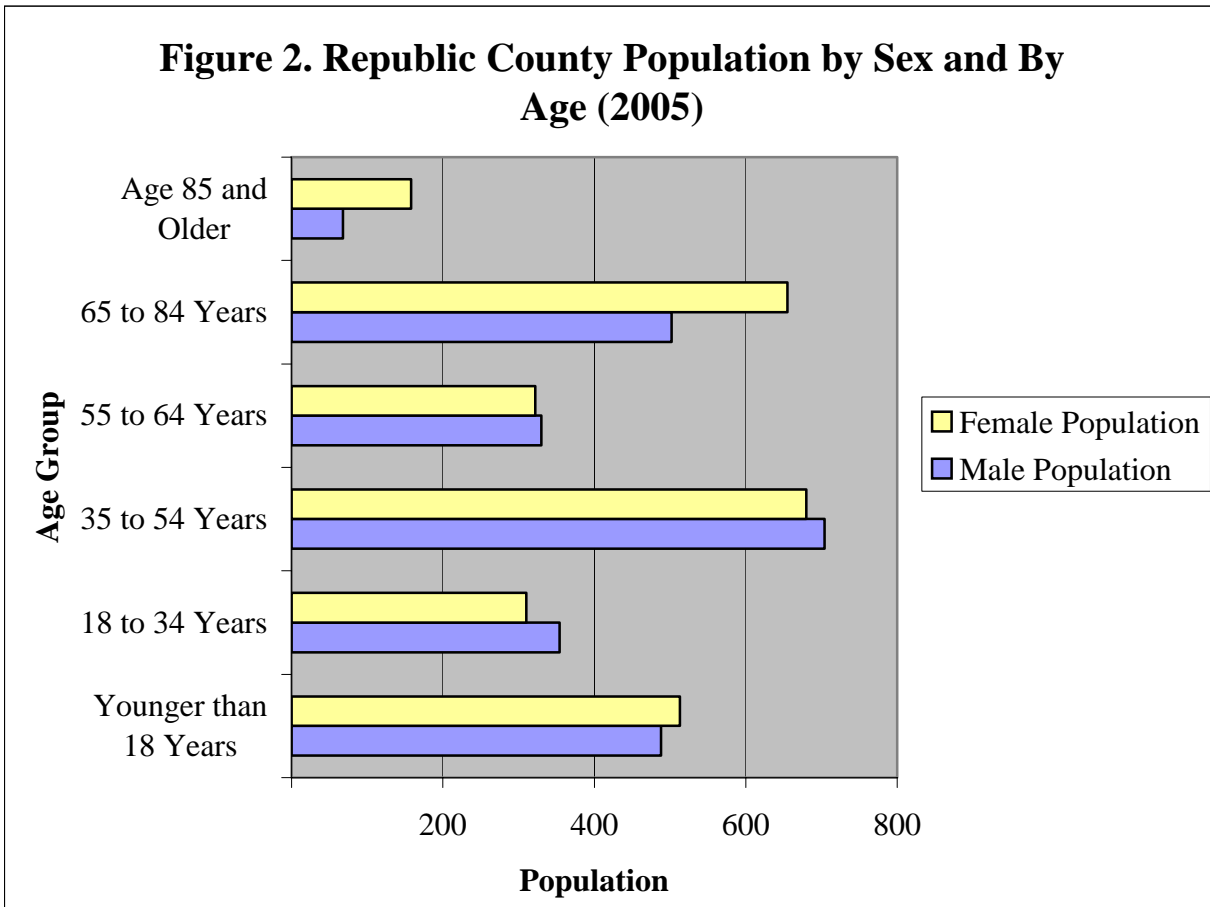
	Republic County				
	Agenda	Belleville	Courtland	Cuba	
Population	5,084	69	1,956	297	194
Percent Change 1990-2005	-21.6	-14.8	-24.0	-13.4	-19.8
					Balance of
	Munden	Narka	Republic	Scandia	County
Population	101	77	143	385	2,568
Percent Change 1990-2005	-29.4	-34.2	-19.2	-8.6	5.0

Claritas, Inc. (2005); Kansas Water Office (2003)

Table 2. Population Projections for Republic County, Selected Years

Year	Agenda	Belleville	Courtland	Cuba	Munden	Narka	Republic	Scandia	Balance of County
1990	81	2,517	343	242	143	113	177	421	2,445
2000	73	2,427	309	234	129	102	159	379	2,201
2010	66	2,372	278	225	116	92	143	341	1,980
2020	59	2,316	250	217	104	82	129	307	1,782
2030	53	2,261	225	208	94	74	116	276	1,604
2040	48	2,206	203	200	84	67	105	249	1,444

Kansas Water Office (2003)



Claritas, Inc. (2005)

Table 2. Republic County Population by Single Classification of Race (2005)

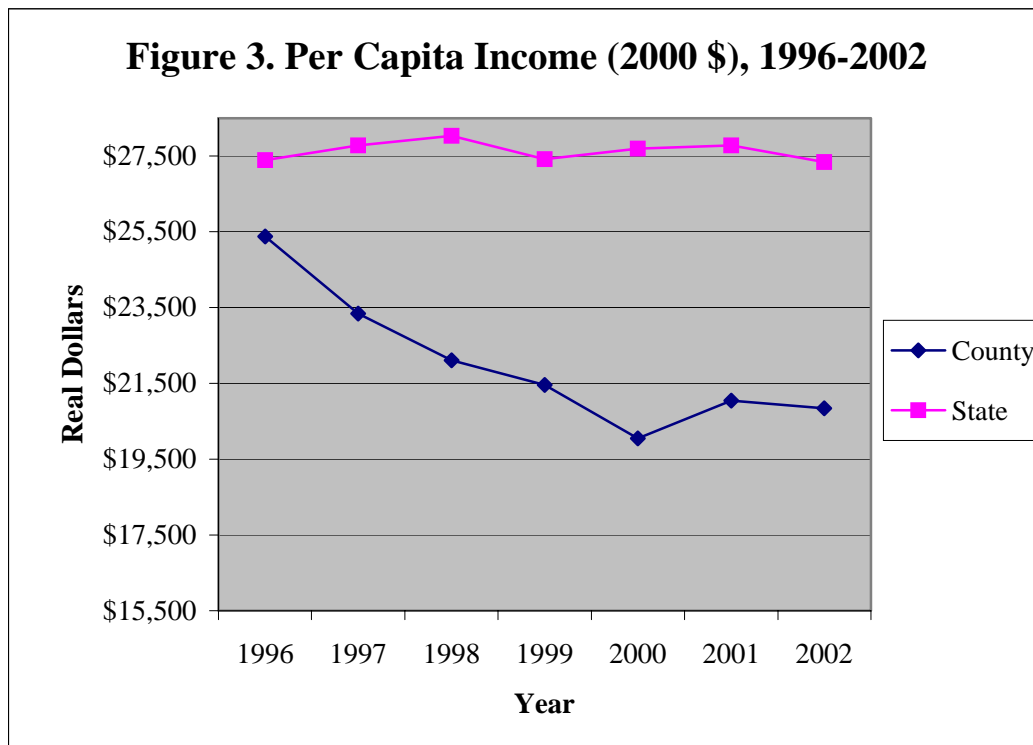
Race Classification	County	Percent
White Alone	4,994	98.2
Black or African American Alone	20	0.4
American Indian and Alaska Native Alone	17	0.3
Asian Alone	13	0.3
Some Other Race Alone	22	0.4
Two or More Races	18	0.4
Total	5,084	100.0

Claritas, Inc. (2005)

Table 3. Estimated Households by Household Income, 2005

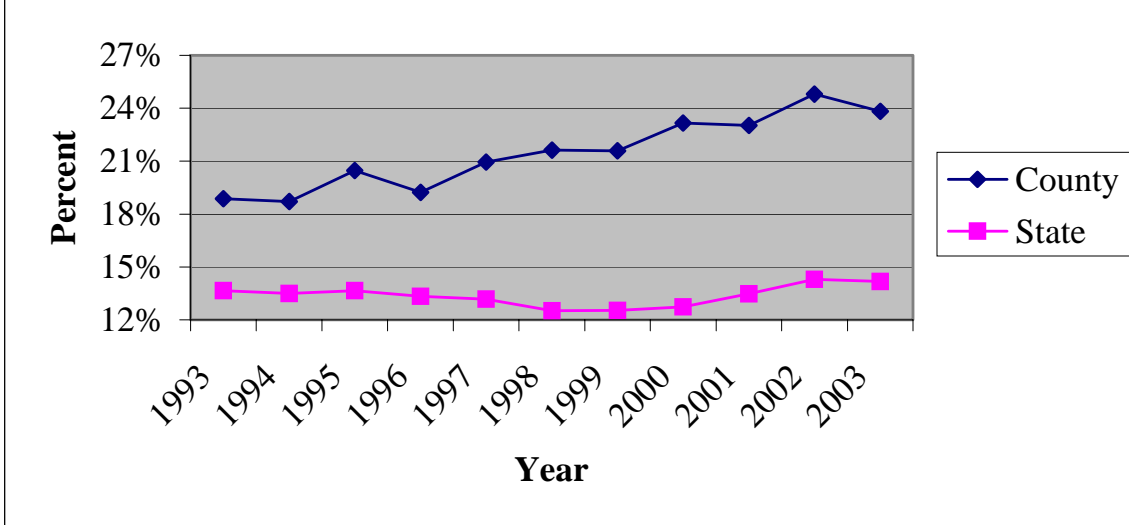
	County	Percent
Income Less than \$15,000	374	16.8
Income \$15,000 - \$24,999	419	18.8
Income \$25,000 - \$34,999	348	15.6
Income \$35,000 - \$49,999	435	19.5
Income \$50,000 - \$74,999	414	18.6
Income \$75,000 - \$99,999	106	4.8
Income \$100,000 - \$149,999	87	3.9
Income \$150,000 - \$249,999	40	1.8
Income \$250,000 - \$499,999	7	0.3
Income \$500,000 and more	1	0.0
Total Estimated Households	2,231	100.0
2005 Estimated Avg. Household Income		\$43,055
2005 Estimated Median Household Income		\$34,255
2005 Estimated Per Capita Income		\$19,620

Claritas, Inc. (2005)



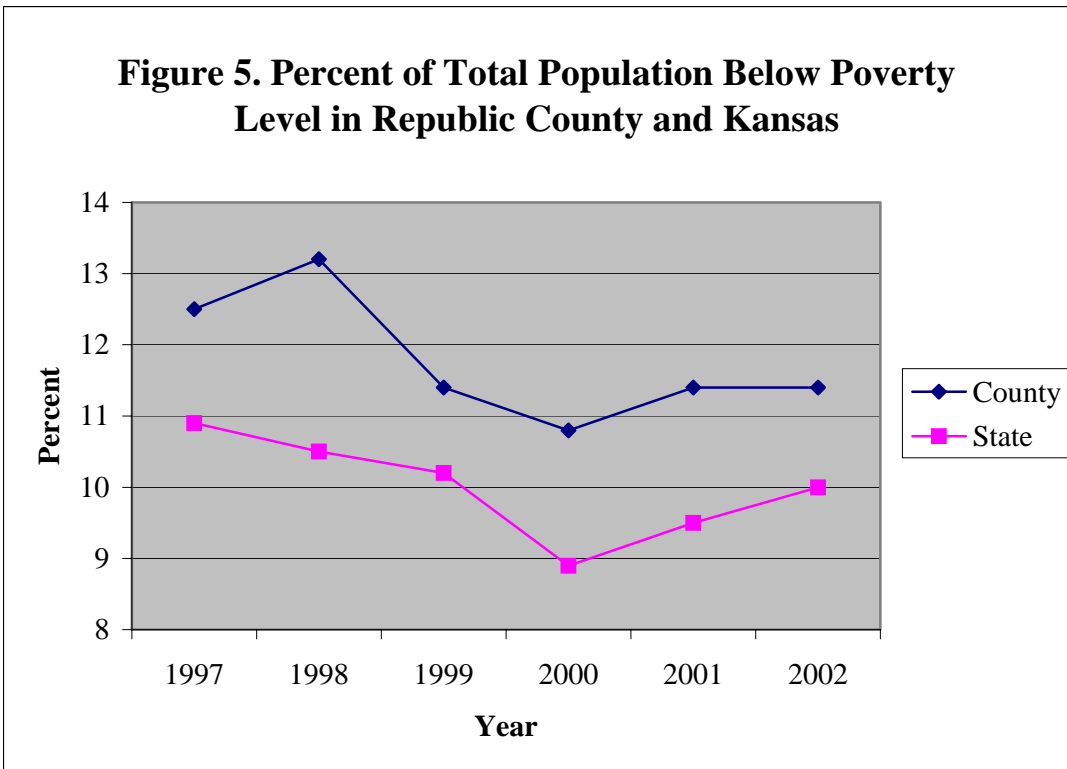
Kansas Statistical Abstract (2003)

Figure 4. Transfer Payments as Percent of Personal Income



Bureau of Economic Analysis (2005)

Figure 5. Percent of Total Population Below Poverty Level in Republic County and Kansas



Kansas Statistical Abstract (2003)

Table 4. Republic County Personal Income by Major Source, Earnings by Major Industry

Data in \$1,000s	2001	2002	2003
Personal income	123,984	117,973	123,294
Population (persons) 2/	5,665	5,449	5,322
Per capita personal income (dollars)	21,886	21,650	23,167
Earnings by place of work	69,459	64,733	69,652
Net earnings by place of residence	62,570	58,193	64,201
plus: Dividends, interest, and rent 5/	32,866	30,527	29,709
plus: Personal current transfer receipts	28,548	29,253	29,384
Wage and salary disbursements	47,720	47,420	43,667
Proprietors' income 6/	11,081	6,018	14,932
Farm proprietors' income	2,060	-3,208	5,358
Nonfarm proprietors' income	9,021	9,226	9,574
Farm earnings	5,652	(L)	8,294
Nonfarm earnings	63,807	64,703	61,358
Private earnings	46,619	46,897	43,209
Forestry, fishing, related activities, and other 7/	(D)	(D)	(D)
Agriculture and forestry support activities	(D)	(D)	(D)
Other 7/	0	0	0
Mining	(D)	(D)	(D)
Utilities	(D)	1,131	263
Construction	4,853	3,540	3,313
Manufacturing	8,797	8,224	7,208
Durable goods manufacturing	(D)	(D)	(D)
Nondurable goods manufacturing	(D)	(D)	(D)
Wholesale trade	3,842	3,852	3,209
Retail trade	5,329	5,125	4,905
Transportation and warehousing	(D)	1,005	1,008
Information	990	1,066	1,134
Finance and insurance	4,493	5,174	4,892
Real estate and rental and leasing	143	139	150
Professional and technical services	1,938	2,082	2,104
Management of companies and enterprises	(D)	(D)	(D)
Administrative and waste services	(D)	(D)	(D)
Educational services	(L)	(L)	(L)
Health care and social assistance	6,653	6,601	6,992
Arts, entertainment, and recreation	(D)	(D)	150
Accommodation and food services	(D)	(D)	1,420
Other services, except public administration	3,091	3,311	3,329
Government and government enterprises	17,188	17,806	18,149
Federal, civilian	1,860	1,857	1,888
Military	443	549	795
State and local	14,885	15,400	15,466
State government	(D)	(D)	(D)
Local government	(D)	(D)	(D)

Bureau of Economic Analysis (2005)

Notes on Table 4:

1. The estimates of earnings for 2001-2003 are based on the 2002 North American Industry Classification System (NAICS).
2. Census Bureau midyear population estimates. Estimates for 2001-2003 reflect county population estimates available as of #pop_date#.
3. Contributions for government social insurance are included in earnings by type and industry but they are excluded from personal income.
4. The adjustment for residence is the net inflow of the earnings of inter-area commuters. For the United States, it consists of adjustments for border workers: Wage and salary disbursements to U.S. residents commuting to Canada less wage and salary disbursements to Canadian and Mexican residents commuting into the United States.
5. Rental income of persons includes the capital consumption adjustment.
6. Proprietors' income includes the inventory valuation adjustment and capital consumption adjustment.
7. "Other" consists of wage and salary disbursements to U.S. residents employed by international organizations and foreign embassies and consulates in the United States.
8. All state and local area dollar estimates are in current dollars (not adjusted for inflation).
9. E – The estimate shown here constitutes the major portion of the true estimate.
10. (D) Not shown to avoid disclosure of confidential information, but the estimates for this item are included in the totals.
11. (L) Less than \$50,000, but the estimates for this item are included in the totals.
12. (N) Data not available for this year.

Table 5. Transfer Payments for Republic County

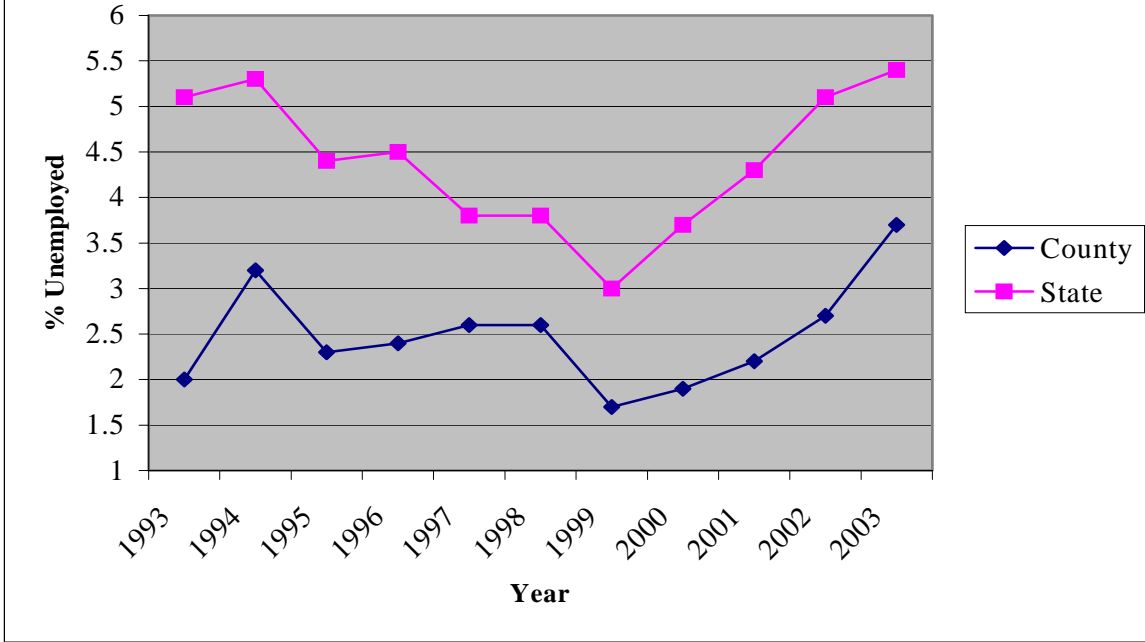
Data in \$1,000s	2001	2002	2003
Total personal current transfer receipts	28,548	29,253	29,384
Current transfer receipts of individuals from governments	26,932	27,934	28,150
Retirement and disability insurance benefits	14,981	14,954	15,027
Old-age, survivors, and disability insurance (OASDI) bene	14,473	14,382	14,407
Railroad retirement and disability benefits	471	522	568
Workers' compensation	(L)	(L)	(L)
Other government retirement and disability insurance bene	(L)	(L)	(L)
Medical benefits	9,875	10,521	10,001
Medicare benefits	5,816	6,042	6,100
Public assistance medical care benefits 2/	3,930	4,311	3,779
Military medical insurance benefits 3/	129	168	122
Income maintenance benefits	1,200	1,284	1,523
Supplemental security income (SSI) benefits	265	306	313
Family assistance 4/	121	84	93
Food stamps	159	132	159
Other income maintenance benefits 5/	655	762	958
Unemployment insurance compensation	320	561	928
State unemployment insurance compensation	316	555	919
Unemployment compensation for Fed. civilian employees 1	(L)	(L)	(L)
Unemployment compensation for railroad employees	0	(L)	(L)
Unemployment compensation for veterans (UCX)	(L)	(L)	(L)
Other unemployment compensation 6/	0	0	0
Veterans benefits	459	547	620
Veterans pension and disability benefits	455	535	610
Veterans readjustment benefits 7/	(L)	(L)	(L)
Veterans life insurance benefits	0	0	0
Other assistance to veterans 8/	0	0	0
Federal education and training assistance	70	(L)	(L)
Other transfer receipts of individuals from governments 10/	(L)	(L)	(L)
Current transfer receipts of nonprofit institutions	907	876	898
Receipts from the Federal government	166	174	190
Receipts from state and local governments 11/	513	505	514
Receipts from businesses	228	197	194
Current transfer receipts of individuals from businesses 12/	709	443	336

Bureau of Economic Analysis (2005)

Notes on Table 5:

1. Consists largely of temporary disability payments and black lung payments.
2. Consists of Medicaid and other medical vendor payments.
3. Consists of payments made under the TriCare Management Program (formerly called CHAMPUS) for the medical care of dependents of active duty military personnel and of retired military personnel and their dependents at nonmilitary medical facilities.
4. Through 1995, consists of emergency assistance and aid to families with dependent children. For 1998 forward, consists of benefits— generally known as temporary assistance for needy families— provided under the Personal Responsibility and Work Opportunity Reconciliation Act of 1996. For 1996–97, consists of payments under all three of these programs.
5. Consists largely of general assistance, refugee assistance, foster home care and adoption assistance, earned income tax credits, and energy assistance.
6. Consists of trade readjustment allowance payments, Redwood Park benefit payments, public service employment benefit payments, and transitional benefit payments.
7. Consists largely of veterans' readjustment benefit payments, educational assistance to spouses and children of disabled or deceased veterans, payments to paraplegics, and payments for autos and conveyances for disabled veterans.
8. Consists of State and local government payments to veterans.
9. Consists largely of federal fellowship payments (National Science Foundation fellowships and traineeships, subsistence payments to State maritime academy cadets, and other federal fellowships), interest subsidy on higher education loans, basic educational opportunity grants, and Job Corps payments.
10. Consists largely of Bureau of Indian Affairs payments, education exchange payments, Alaska Permanent Fund dividend payments, compensation of survivors of public safety officers, compensation of victims of crime, disaster relief payments, compensation for Japanese internment, and other special payments to individuals.
11. Consists of State and local government educational assistance payments to nonprofit institutions, and other State and local government payments to nonprofit institutions.
12. Consists largely of personal injury payments to individuals other than employees and other business transfer payments.
13. All state and local area dollar estimates are in current dollars (not adjusted for inflation).
14. (L) Less than \$50,000, but the estimates for this item are included in the totals.
15. (N) Data not available for this year.

Figure 6. Unemployment Rates for Republic County and Kansas, 1993-2003



Kansas Statistical Abstract (2003)

Table 6. Full-Time and Part-Time Employment by Major Industry (Total Jobs)

	2001	2002	2003
Total employment	3,924	3,967	3,727
Wage and salary employment	2,572	2,591	2,329
Proprietors employment	1,352	1,376	1,398
Farm proprietors employment	711	722	722
Nonfarm proprietors employment 2/	641	654	676
Farm employment	891	888	871
Nonfarm employment	3,033	3,079	2,856
Private employment	2,302	2,326	2,138
Forestry, fishing, related activities, and other 3	(D)	(D)	(D)
Mining	(D)	(D)	(D)
Utilities	(D)	15	0
Construction	198	157	141
Manufacturing	313	267	208
Wholesale trade	181	179	154
Retail trade	347	349	337
Transportation and warehousing	(D)	49	47
Information	32	30	29
Finance and insurance	192	204	198
Real estate and rental and leasing	41	43	44
Professional and technical services	63	72	73
Management of companies and enterprises	(D)	(D)	(D)
Administrative and waste services	(D)	(D)	(D)
Educational services	(L)	(L)	(L)
Health care and social assistance	346	327	329
Arts, entertainment, and recreation	(D)	(D)	19
Accommodation and food services	(D)	(D)	212
Other services, except public administration	208	217	216
Government and government enterprises	731	753	718
Federal, civilian	41	39	40
Military	26	26	25
State and local	664	688	653
State government	(D)	(D)	(D)
Local government	(D)	(D)	(D)

Bureau of Economic Analysis (2005)

Notes:

1. The estimates of employment for 2001-2003 are based on the 2002 North American Industry Classification System (NAICS).

2. Excludes limited partners.

3. "Other" consists of the number of jobs held by U.S. residents employed by international organizations and foreign embassies and consulates in the United States.

E The estimate shown here constitutes the major portion of the true estimate.

(D) Not shown to avoid disclosure of confidential information, but the estimates for this item are included in the totals.

(L) Less than 10 jobs, but the estimates for this item are included in the totals.

(N) Data not available for this year.

Health and Behavioral Data

Table 7. State and Medicaid Funded Services in Republic County

Major Services [2]	(Monthly Averages)		
	Persons Served [1]		
	FY 2002	FY 2003	FY 2004
Temporary Assistance for Families	23	28	38
% Total Population	0.4%	0.5%	0.7%
Food Assistance	210	248	261
% Total Population	3.9%	4.7%	4.9%
Health Care Total	610	611	651
% Total Population	11.5%	11.5%	12.2%
Health Care Populations:			
Families	360	377	428
Elderly and Disabled	232	215	209
Child Welfare	17	18	13
Other	1	1	1
Medicaid Funded Community Based Services			
Physical Disability	5	6	6
Head Injury	1	1	0
Developmental Disability	10	11	10
Severe and Emotionally Disturb	4	5	7
% Total Population	0.4%	0.4%	0.4%

Kansas Department of Social and Rehabilitation Services (2004)

1. All persons served represent the average monthly persons served per year. The exceptions are asterisked. The unit of service for energy assistance is the annual households served and the unit of service for family preservation is the number of families referred.

2. This is not an exhaustive listing of all programs within SRS. This listing does not include Grants.

Table 8. Nursing Home Beds and Assisted Living Beds and Occupancy

	2001	2002	2003
Nursing Home			
Beds	114	78	78
Occupancy	88	71	74
Occupancy Rate	76.4%	91.7%	95.5%

Kansas Department on Aging (2004)

Occupancy Data for July-December of each year

Table 9. Child Abuse and Juvenile Crime

	County	State
Substantiated Child Abuse and Neglect Cases	6	7,024
Cases per 1,000 children 17 and under (2003)	5.7	10.1
Annual Average Rate 1998-2002	6.6	11.3
Percent Change	-13.0	-10.6
Juvenile Court Filings (through June 2004)	17	14,719
Rate per 1,000 children under 17	16.2	21.2
Annual Average (1999-2003)	19.8	23.3
Percent Change	-18.5	-9.0

Kansas KIDSCount (2005); Kansas Bureau of Investigation (2003)

Table 10. Birth, Infant Mortality, Childhood Deaths, and Teenage Maternity Statistics

Births to School-Aged Mothers (2003)	County	State
Number	3	1,214
Rate per 1,000	9.9	7.8
Annual Average Rate (1998-2002)	3.6	9.2
Percent Change	173.9	-15.2
Infant Mortalities		
Number	1	262
Rate per 1,000	22.7	6.7
Annual Average Rate (1998-2002)	0	7.1
Percent Change	--	-15.2
Childhood Deaths		
Number	0	126
Rate per 1,000	0	23.5
Annual Average Rate (1998-2002)	21.2	25.6
Percent Change	-100	-82
Low Birth Weight Babies		
Number	5	2,902
Rate per 1,000	11.4	7.4
Annual Average Rate (1998-2002)	8.3	7.0
Percent Change	36.9	5.7

Kansas KIDSCount (2005)

Table 11. Maternity Statistics

	County	State
Births by Mother's Race (2003)		
White	42	34,801
Black	1	2,753
Other Non-White	0	1,716
Not Specified	1	83
Births to Mothers with Less than High School Degree		
Number	7	7,185
Rate per 1,000	15.9	18.5
Annual Avg. 1998-2002	10.4	18.6
Percent change	53.6	-0.5
Births with Adequate or Better Prenatal Care		
Number	37	31,539
Rate per 1,000	84.1	81.2
Annual Avg. 1998-2002	80.3	80.8
Percent change	4.7	0.5

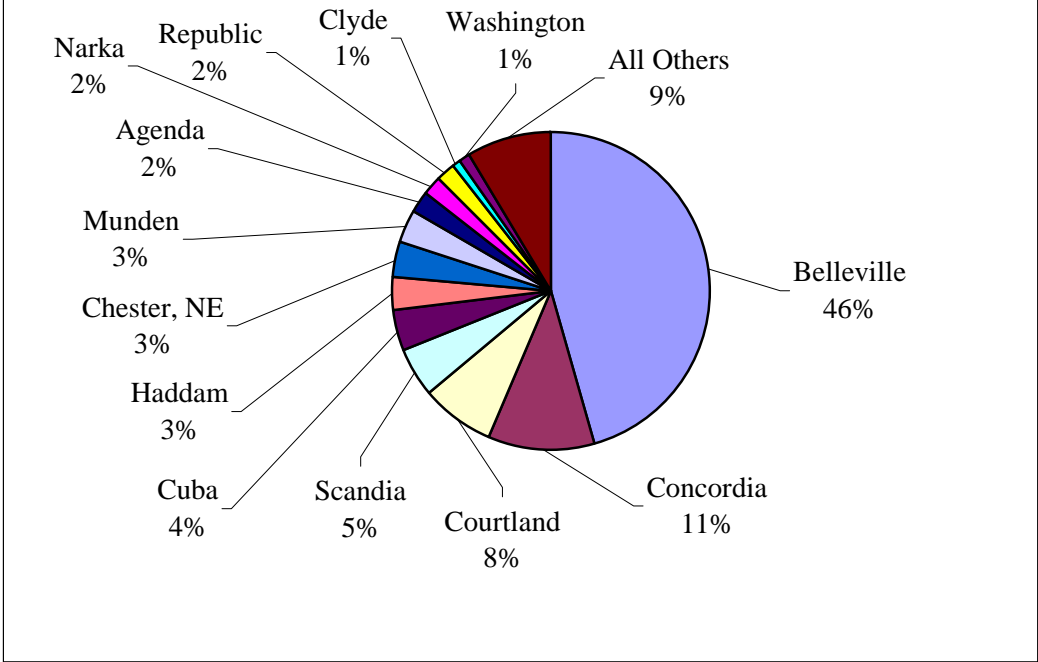
KDHE Annual Summary of Vital Statistics (2003)

Table 12. Republic County Hospital Data

Licensed Acute Beds	25
Staffed Beds	25
Staffed Beds Nursing Home Unit	38
Admissions	Number
Hospital	1,088
Nursing Home Unit	29
Swing Beds	198
Emergency Room Visits	1,577
Outpatient Visits	10,347
Inpatient Surgical Operations	227
Outpatient Surgical Operations	604
<hr/>	
Medicare Discharges	
Hospital	771
Nursing Home Unit	-
<hr/>	
Medicare Inpatient Days	
Hospital	3,846
Nursing Home Unit	-
<hr/>	
Medicaid Discharges	
Hospital	45
Nursing Home Unit	10
<hr/>	
Medicaid Inpatient Days	
Hospital	82
Nursing Home Unit	6,013

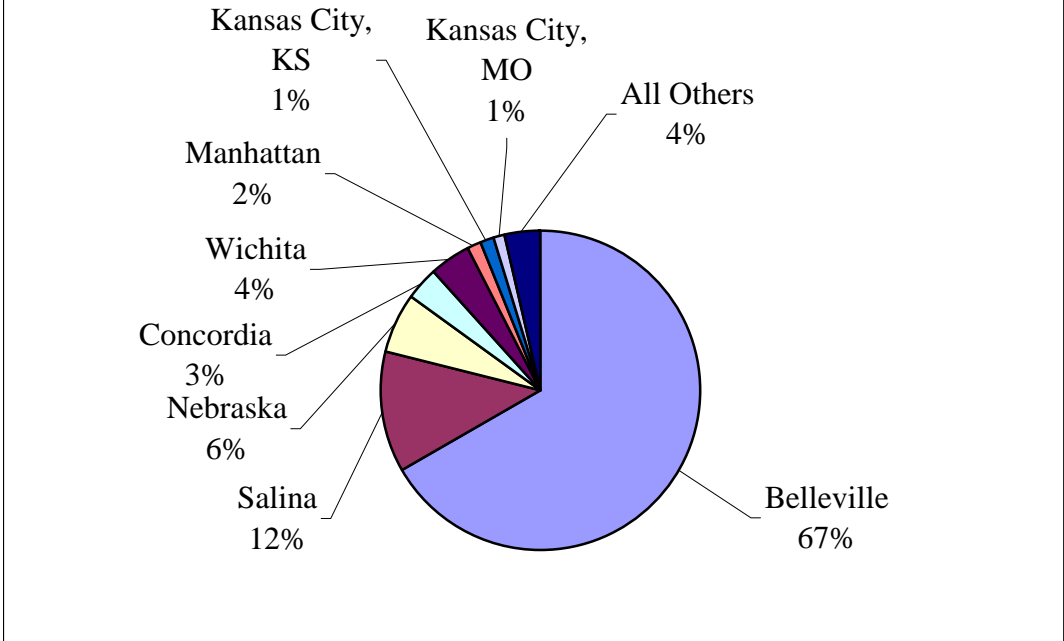
Kansas Hospital Association STAT Book (2004)

Figure 7. Republic County Hospital Visits by Patient Origin, March 2003 - October 2004



Kansas Hospital Association (2004)

Figure 8. Republic County Hospital Visits by Patient Destination, March 2003 - October 2004



Kansas Hospital Association (2004)

Education

School Districts in Republic County

USD 455 Hillcrest Rural Schools

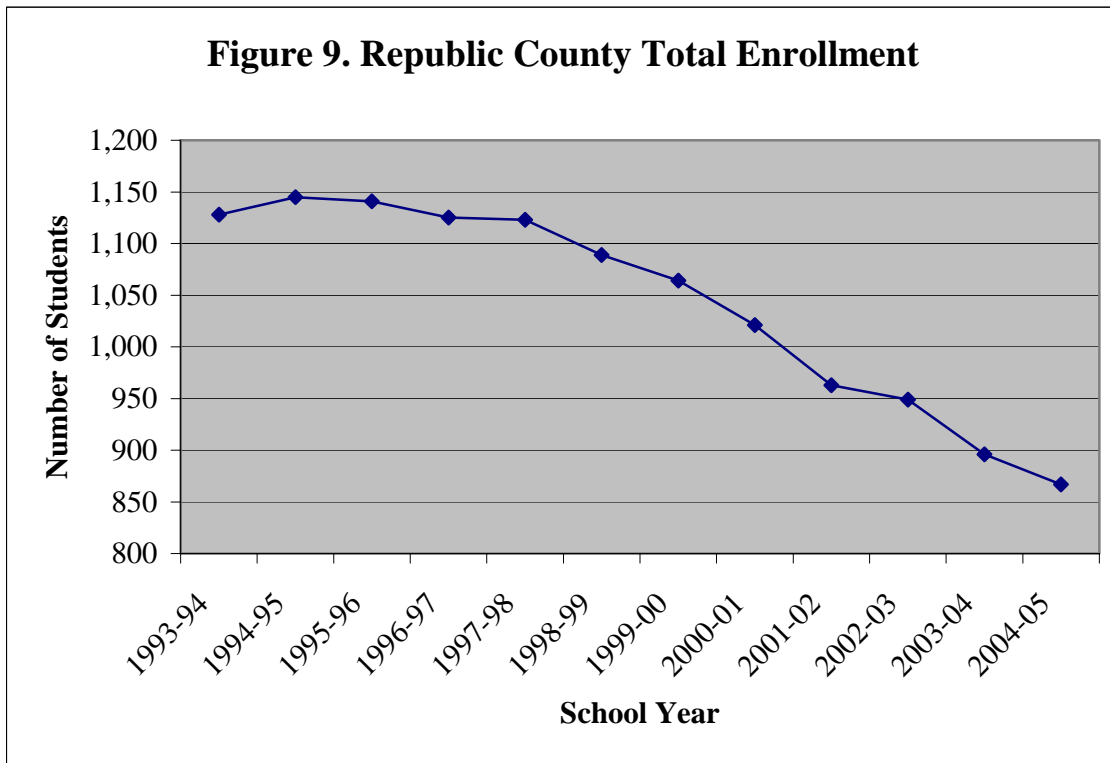
USD 426 Pike Valley

USD 427 Republic County

Table 13. Education Statistics

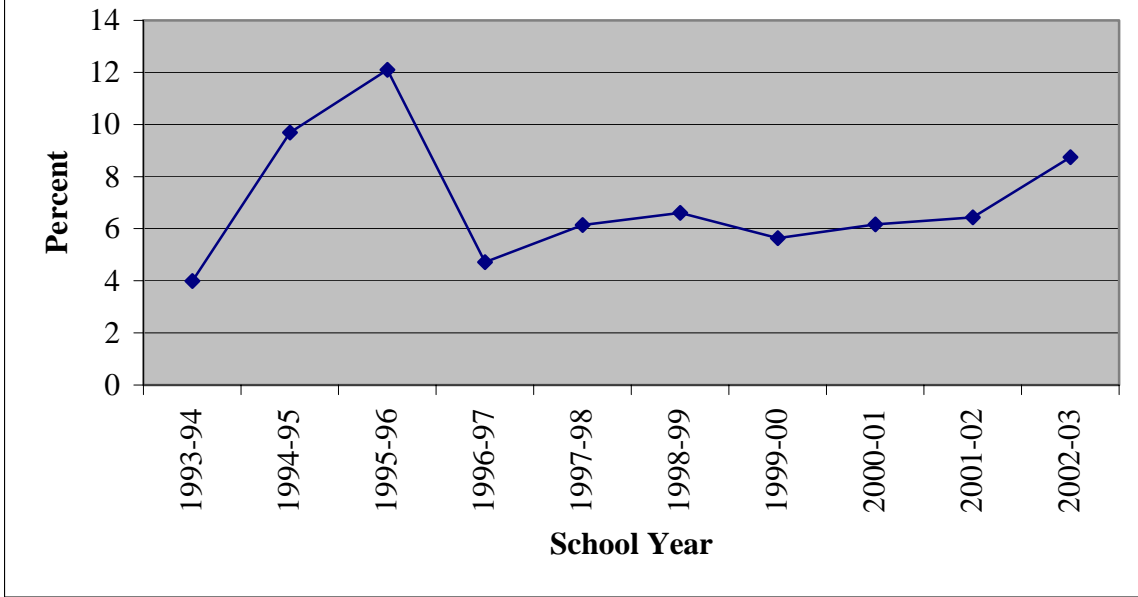
Student-Teacher Ratio (2003-2004)	10.5	
High School Dropouts	2001-2002	2002-2003
Number	3	2
Percent	0.6	0.4

Kansas Department of Education (2005)



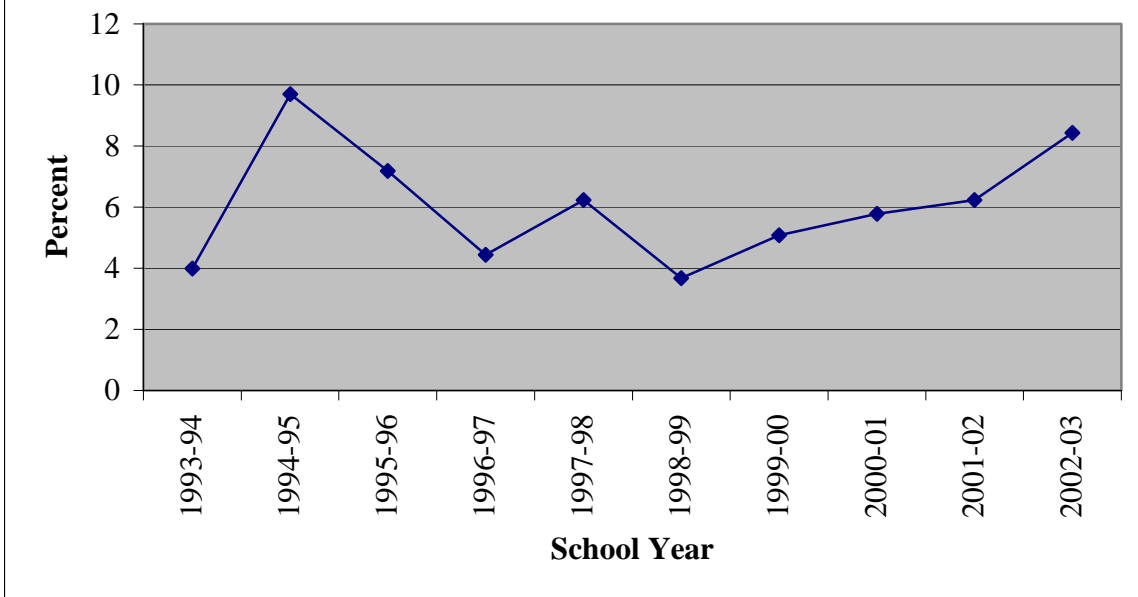
Kansas Department of Education (2005)

Figure 10. Percent of Total Enrollment Passing At Least One Advanced Math Course

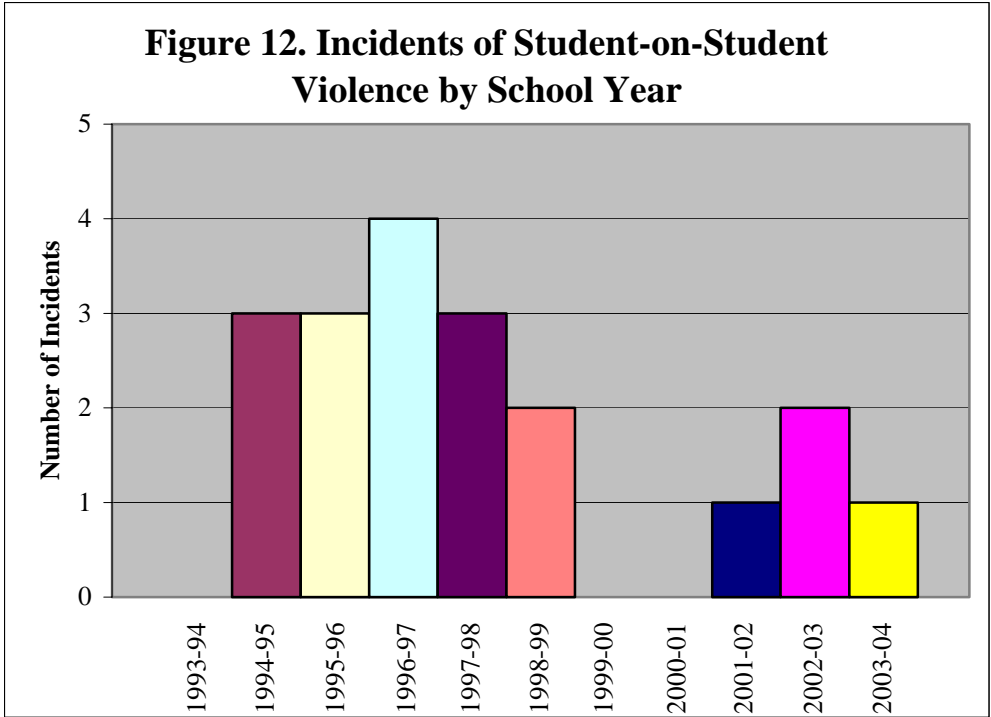


Kansas Department of Education (2005)

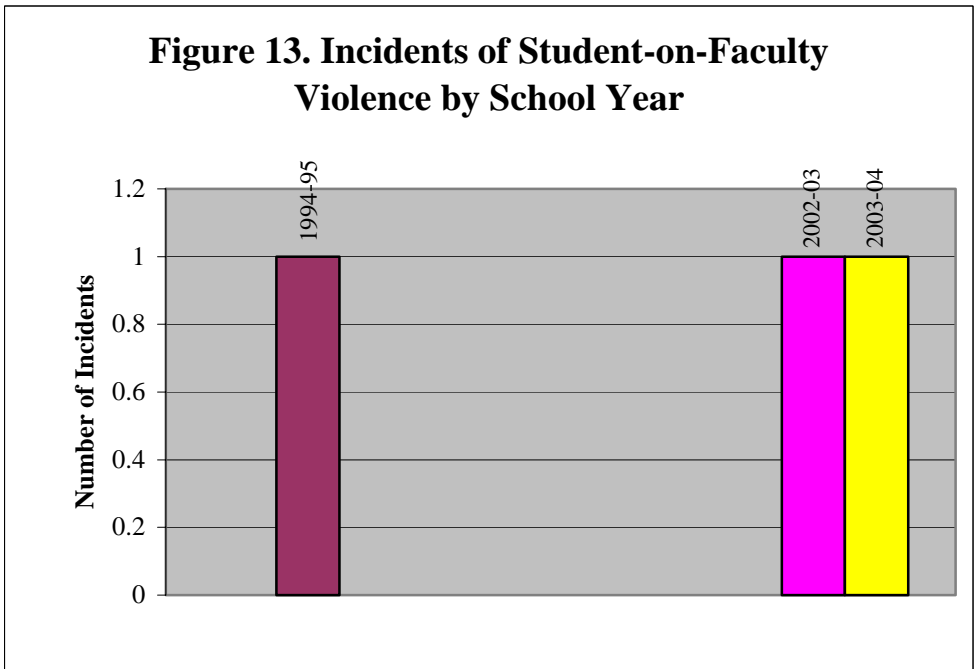
Figure 11. Percent of Total Enrollment Passing At Least One Advanced Science Course



Kansas Department of Education (2005)



Kansas Department of Education (2005)



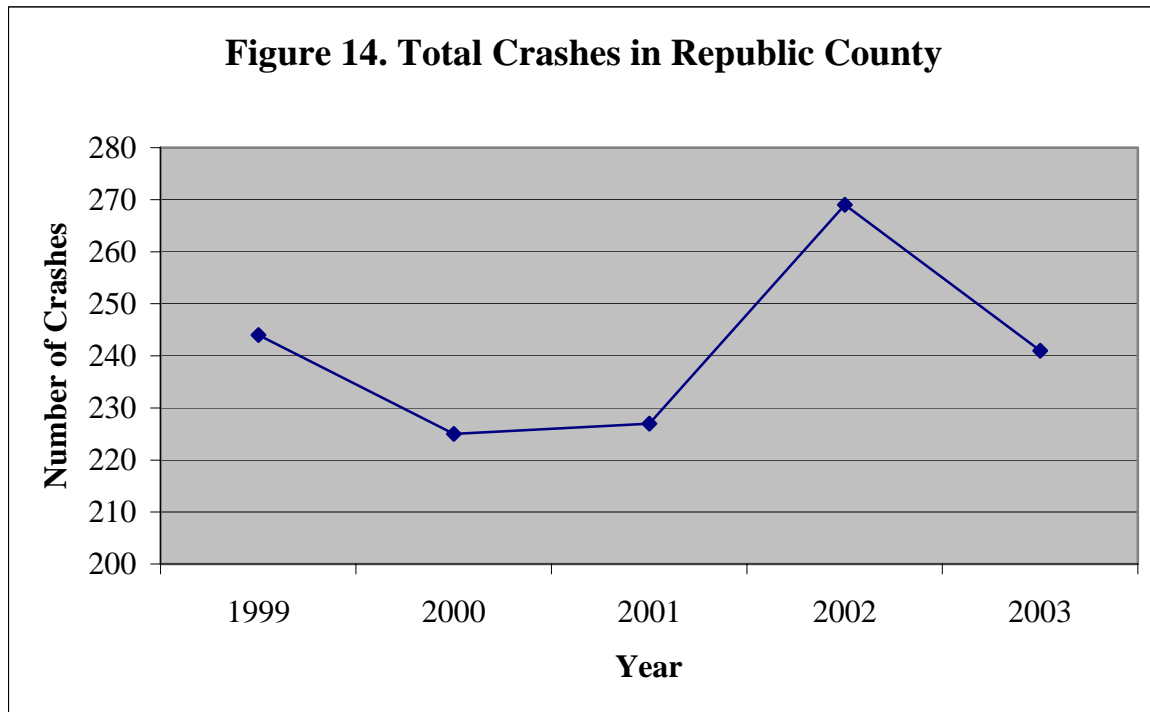
Kansas Department of Education (2005)

Traffic

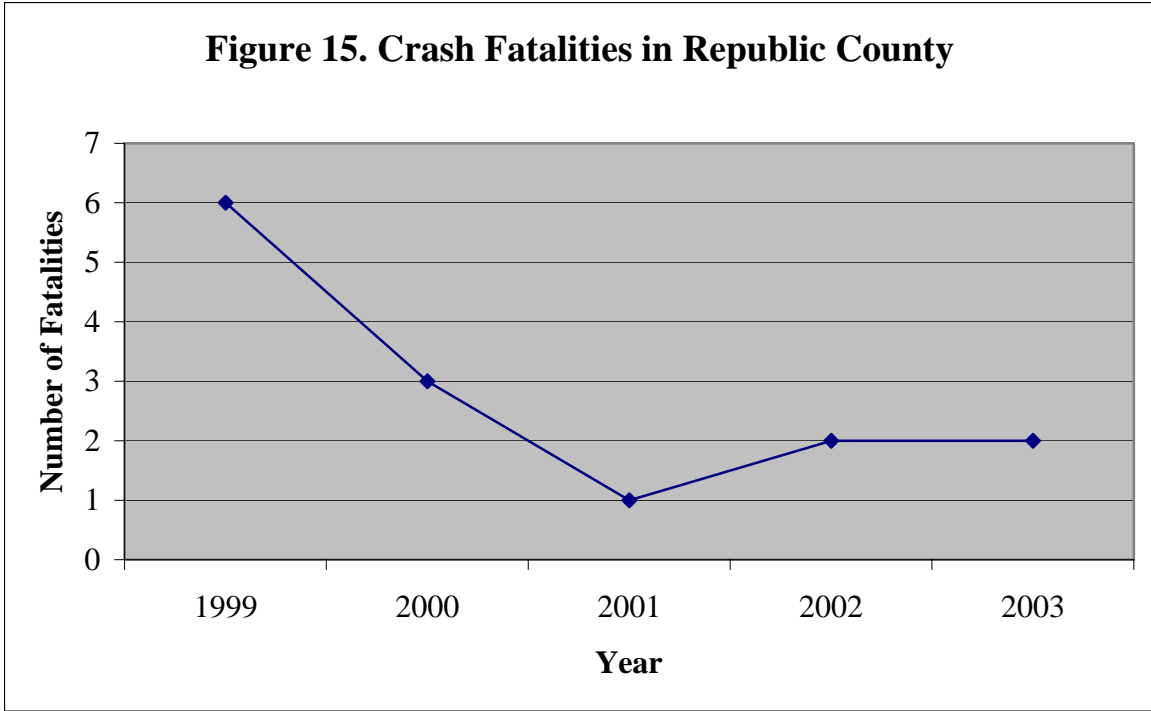
Table 14. Traffic Accident Facts for Republic County

	County Total	County Rate per 1,000	State Rate per 1,000
Accidents			
Total	241	45.3	27.5
Fatal Accidents	2	0.4	0.2
Injury Accidents	39	7.3	6.3
Property Damage Only	200	37.6	21.1
Deer Involved	116	21.8	3.3
Speed Related	21	3.9	3.1
Alcohol Related	5	0.9	1.3
People			
Deaths	2	0.4	0.2
Injuries	55	10.3	9.1
Pedestrians	0	0.0	0.3
% Restraint Use		80.7	83.7

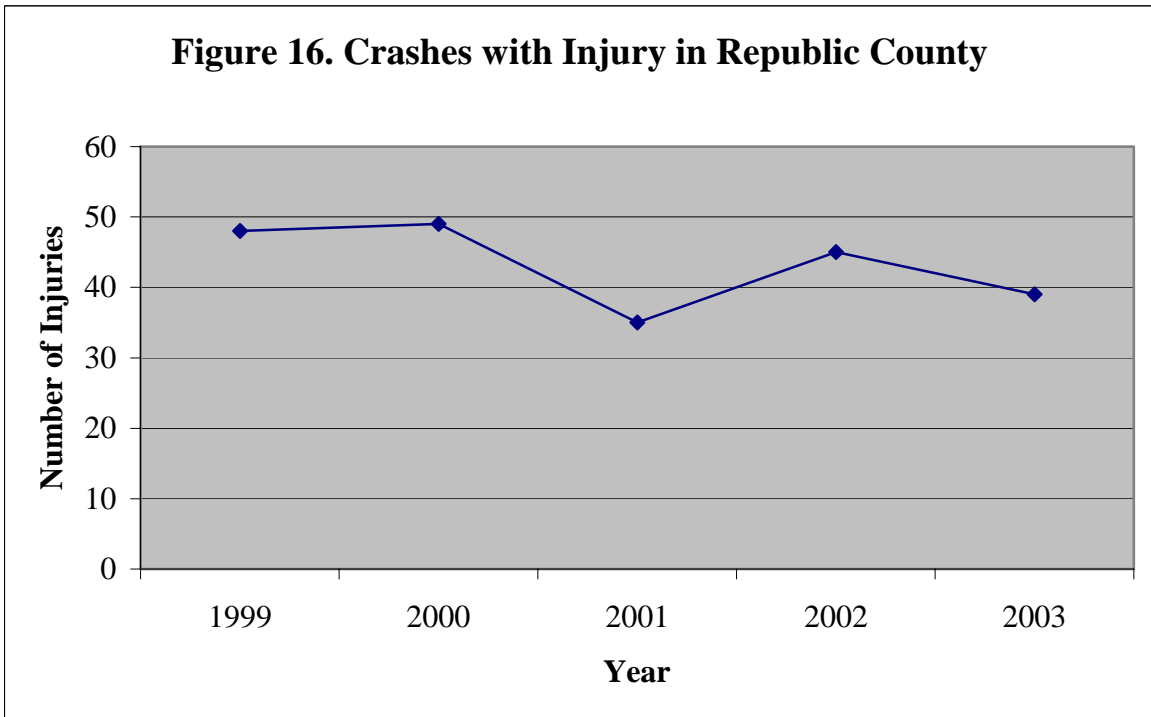
Kansas Traffic Accident Facts County Summaries (2003)



Kansas Traffic Facts (2003)



Kansas Traffic Facts (2003)



Kansas Traffic Facts (2003)

Crime

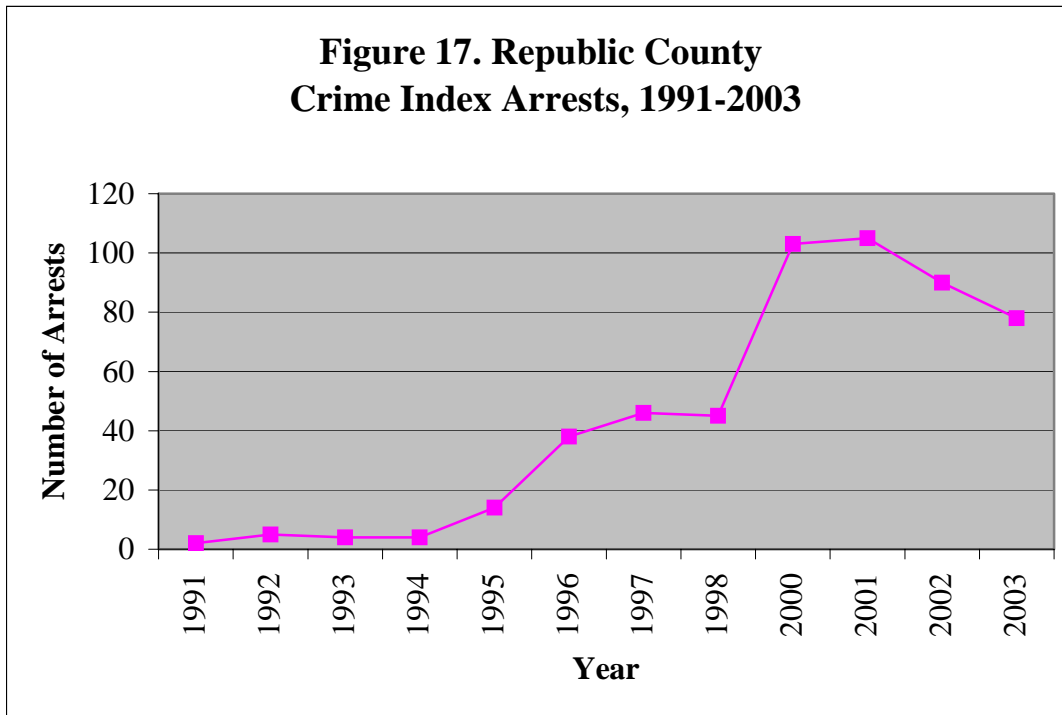
Table 15. Crime Statistics for Republic County and Kansas

2002						
	Crime Index Offenses		Violent Crime		Property Crime	
	Number	Rate per 1,000	Number	Rate per 1,000	Number	Rate per 1,000
County	117	19.8	1	0.2	116	19.7
State	73,620	27.2	6,641	2.4	66,979	24.7

2003						
	Crime Index Offenses		Violent Crime		Property Crime	
	Number	Rate per 1,000	Number	Rate per 1,000	Number	Rate per 1,000
County	118	21.5	4	0.7	114	20.8
State	117,295	43.0	10,099	4.0	107,196	39.0

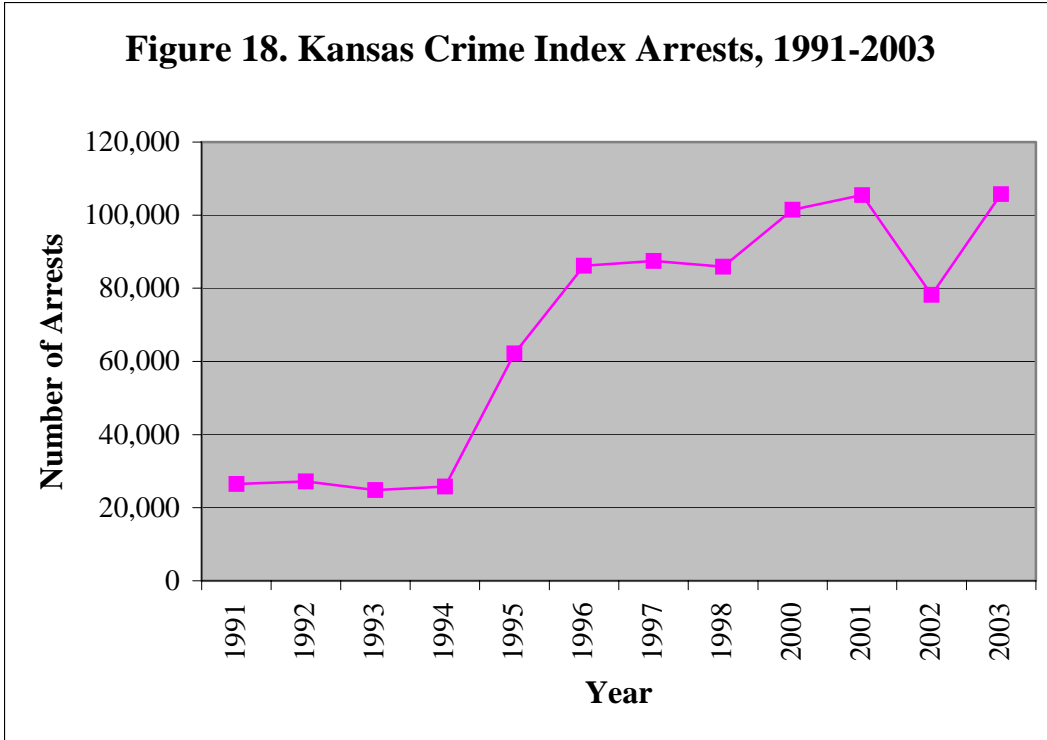
Kansas Statistical Abstract (2003)

Index crimes include murder, rape, robbery, aggravated assault, burglary, larceny, and motor vehicle theft.



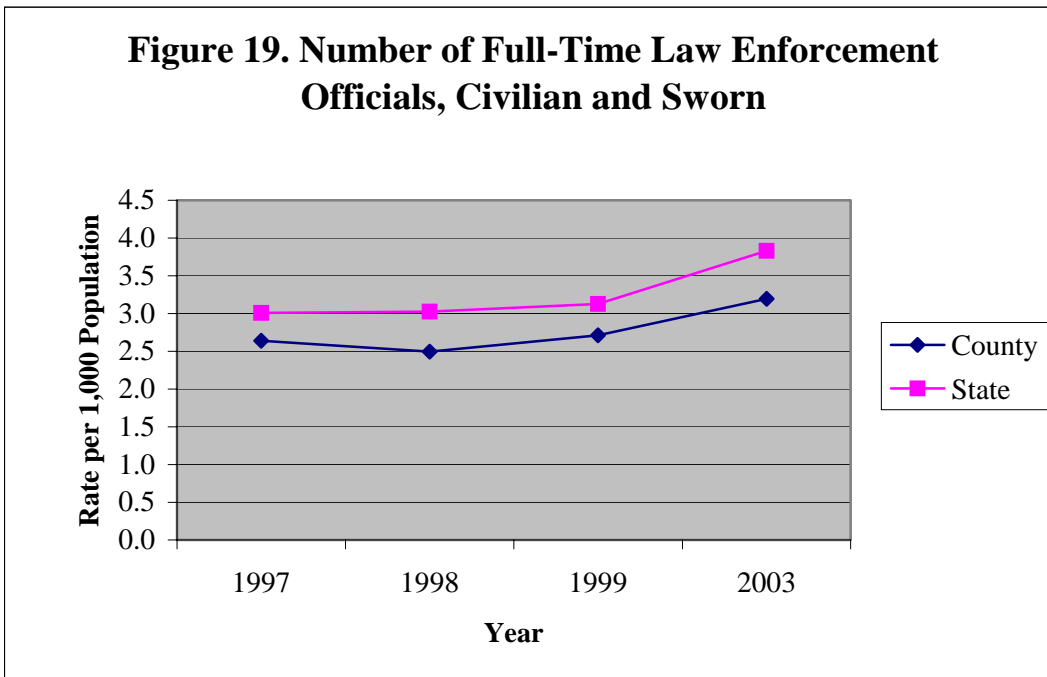
Kansas Bureau of Investigation (2003)

Figure 18. Kansas Crime Index Arrests, 1991-2003



Kansas Bureau of Investigation (2003)

Figure 19. Number of Full-Time Law Enforcement Officials, Civilian and Sworn





**Kansas State University Agricultural Experiment Station and Cooperative Extension Service,
Manhattan, Kansas.**

It is the policy of Kansas State University Agricultural Experiment Station and Cooperative Extension Service that all persons shall have equal opportunity and access to its educational programs, services, activities, and materials without regard to race, color, religion, national origin, sex, age or disability. Kansas State University is an equal opportunity organization.

Issued in furtherance of Cooperative Extension Work, Acts of May 8 and June 30, 1914, as amended. Kansas State University, County Extension Councils, Extension Districts, and United States Department of Agriculture Cooperating, Fred A. Cholick, Dean, College of Agriculture.