

Stafford County Health Area
Data and Information
May 2006

Produced by

office of
Local Government
K-State Research and Extension

and



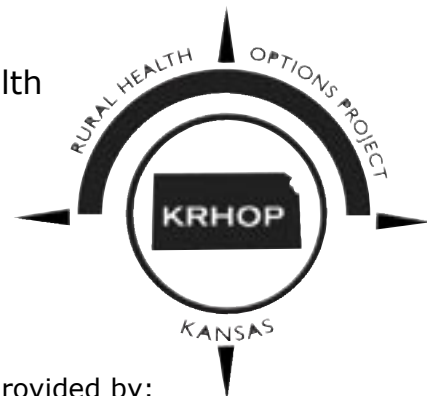
Cindi Browne
Student Assistant

Aaron K. Lusby
Extension Associate

John Leatherman, Director

In cooperation with:

Stafford County Health
Area Steering
Committee



Funding for this report provided by:
Office of Rural Health Policy
Health Resources and Services Administration
(Grant# 5 H54RH00009-07-00)

Stafford County Health Area Data and Information

The organization and delivery of health care services have undergone rapid evolution in recent years. For many Americans, the cost of services and access to care are important issues. This certainly applies to many rural areas where communities have struggled to maintain affordable, quality health care systems. As economic forces and technical advances continue to change health care, it is more important than ever for rural community leaders and health care providers to work together to ensure affordable, sustainable health care systems.

In an effort to provide useful information resources to rural community and health care leaders, the Kansas Rural Health Options Project (KRHOP) has teamed with the Office of Local Government, a unit of the Department of Agricultural Economics and K-State Research and Extension, to develop this report as a component of the Kansas Rural Health Works program. KRHOP is a partnership of the Office of Local and Rural Health at the Kansas Department of Health and Environment, the Kansas Hospital Association, the Kansas Board of Emergency Medical Services and the Kansas Medical Society. KRHOP is dedicated to assuring quality health care delivery in rural Kansas through the promotion of collaborative systems of care. Kansas Rural Health Works is supported by a federal grant to KRHOP (No. 5 H54RH00009-07-00) from the Health Resources and Services Administration, Office of Rural Health Policy.

This report presents a variety of information about Stafford County and its health care system. It includes demographic, economic, health and medical data, as well as statistics on traffic and crime specific to the county. When available, county statistics are compared with state statistics. It presents a current picture of the county, and also provides some insight on the county's future.

The Office of Local Government welcomes any questions, comments or suggestions about this report or any of their other services. Contact your county Extension office or:

Dr. Aaron K. Lusby
Office of Local Government
Department of Agricultural Economics
K-State Research and Extension
Manhattan, KS 66506-3415

Phone: 785-532-2643
10E Umberger Hall
Fax: 785-532-3093
Email: alusby@agecon.ksu.edu

Table of Contents

Stafford County Health Area Data and Information	1
Economic Data	4
Population	5
Population Projections	5
Population Estimates.....	5
Population by Race	5
Population Hispanic or Latino by Origin.....	6
Per Capita Income.....	10
Unemployment Rates.....	15
Health and Behavioral Data	16
Education	23
Student-on-Student Violence	27
Traffic	28
Crashes in Stafford County.....	29
Crime	32

Stafford County Health Area Data and Information

Demographics and Economics

The Stafford County Health Area extends beyond the boundaries of Stafford County; Figure i shows that the area actually includes part of Reno and Pratt Counties. The first section of the report covers demographic and economic information. The Stafford County Health area's estimated current population is 6,167 people. This represents about a five percent decline in population since the 2000 U.S. Census. St. John, the largest city in the area, has seen an almost seven percent decline in population since 2000. During the same time period, the city of Stafford has seen the largest population decline, while Sylvia had no change in population. Data from the Kansas Water Office indicate that Stafford County will see a continued decline in population through 2040. Additionally, 95 percent of the population is white, females outnumber males in Stafford County, especially among the age groups 65 and older.

In terms of income, the average household will have an estimated \$41,458 in income in 2005, and the estimated annual income per person is \$17,471. From 1995 to 2005, per capita income in Kansas and Stafford County have all increased. Stafford increased from almost \$19,000 in 1995 to almost \$23,000 in 2005. Reno increased from about \$20,000 in 1995 to more than \$23,000 in 2005. Per capita incomes in the area have been lower than per capita income for the state as a whole. Transfer payments, such as government payments for health care and social security, taken as a percentage of total individual income, have risen slightly in Stafford County since 1995. The percent of total county population who live below the poverty level in Stafford County fluctuated slightly but decreased overall from 1997 to 2002. The state, as a whole, has a lower percent of population below poverty level. From 1993 to 2003, unemployment rates have slightly decreased in Stafford County, with unemployment rates lower in Stafford County. Kansas had a small increase in the unemployment rate in the same time period.

Health and Behavior

The second section of the report deals with health and behavioral information. The number of families served by state and Medicaid funded services, such as Temporary Assistance for Families and Food Assistance, has increased in both Stafford and Reno Counties. The number of nursing home beds in Stafford County has increased while the average occupancy rate has decreased.

Part of this section is devoted to child and teen health. Stafford County saw an almost 40 percent decrease in the rate of substantiated cases of child abuse and neglect and saw a 1.5 percent decrease in the rate of juvenile court filings. Births to school-aged mothers and low birth weights decreased in 2003 for Stafford County. Stafford County saw an increase in the rate of births with adequate or better prenatal care.

Statistics from the Kansas Hospital Association show that most people who used Stafford County Hospital between March of 2003 and October of 2004 came from within Stafford

County. Conversely, 78 percent of hospital users in Stafford County visited hospitals outside Stafford County.

Education

The Stafford County Health Area has four school districts: Macksville (USD 351), St. John-Hudson (USD 350), Stafford (USD 349) and Fairfield (USD 310), which is located within Reno County. Total enrollment in the school systems has decreased from about 1,600 students in 1993-1994 to about 1,450 students at the beginning of 2004-2005. Incidents of student-on-student violence have also decreased over time.

Traffic

In 2003, the latest available data, Stafford County had 173 total traffic accidents, or a rate of 37.7 accidents per 1,000 people, compared to 35.7 accidents per 1,000 people in Kansas. Only one of the Stafford County accidents was fatal, while 25 involved an injury and 147 involved property damage. Deer-involved accidents occurred in Stafford County at a rate of 20.9 accidents per 1,000 people and in Kansas at a rate of 4.3 accidents per 1,000 people. Two accidents in Stafford County involved alcohol. In 82.5 percent of accidents in Stafford County, restraints were in use, compared to 83.7 percent in Kansas.

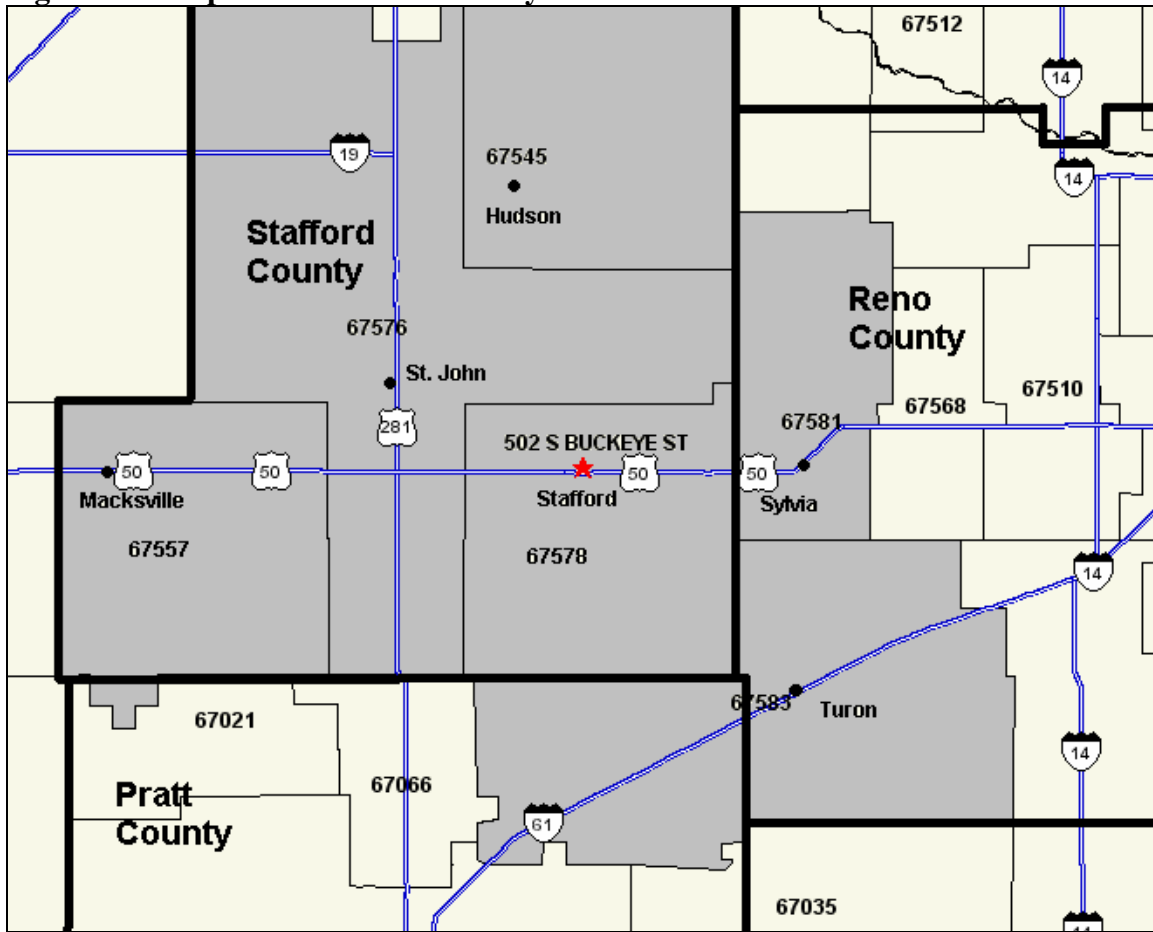
Crime

The final section of the report looks at crime statistics in Stafford County. Crime index arrests, which include murder, rape, robbery, aggravated assault, burglary, larceny and motor vehicle theft, increased between 1991 and 2003 in Stafford County. The state of Kansas also experienced an increase in crime index arrests during that time period. Between 1998 and 2004, the number of full-time law enforcement officials increased, such that Stafford County has 3.9 officials per 1,000 people, compared to 3.8 officials per 1,000 people for the state.

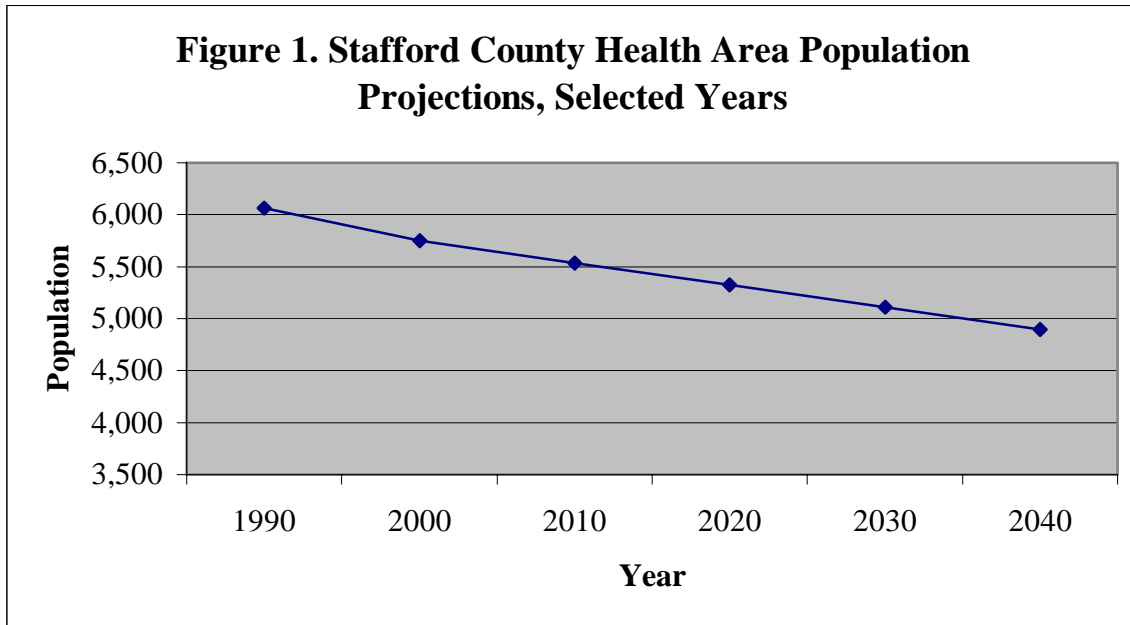
Summary

Stafford County and health area faces a declining population base. Per capita incomes have increased and unemployment rates are slightly lower in Stafford County than Kansas. The use of Medicaid funded services has increased, and the number of nursing home beds has increased in Stafford County, though nursing home occupancy rates have decreased. Births to school-aged mothers have decreased, as have the number of low weight births, and the number of babies receiving at least adequate prenatal care has increased. Enrollment in the school system has declined in the Stafford County Health Area as the population has declined.

Figure i. A Map of the Stafford County Health Area



Economic Data



Kansas Water Office (2003)

Table 1. Population Estimates for Stafford County Health Area

	Stafford County Area*	Hudson	Macksville	Radium	Sylvia
Population	6,167	128	495	38	297
Percent Change 2000-2004	-5.3%	-75.0%	-3.3%	-5.0%	0.0%
					Balance of County
	Seward	St. John	Stafford	Turon	
Population	61	1,224	1,077	435	2,412
Percent Change 2000-2004	-3.2%	-6.6%	-6.7%	-23.0%	-4.8%

U.S. Census (2005) and Claritas, Inc (2005)

*2005 estimate

Table 2. Population by Race for Stafford County Health Area

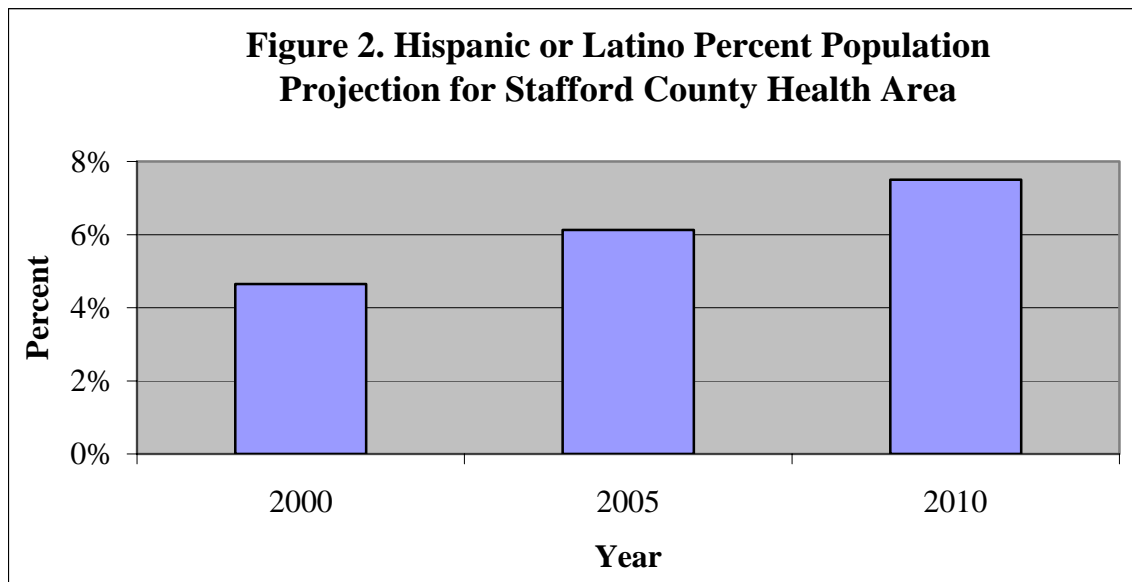
Race Classification	County	Percent
White Alone	5,844	94.8
Black or African American Alone	8	0.1
American Indian and Alaska Native Alone	21	0.3
Asian Alone	8	0.1
Some Other Race Alone	212	3.4
Two or More Races	74	1.2
Total	6,167	100.0

Claritas, Inc (2005)

Table 3. Stafford County Health Area Estimated Population Hispanic or Latino by Origin

Category	Number	Percent
Not Hispanic or Latino	5,789	93.9
Hispanic or Latino	378	6.1
Total	6,167	100.0
Hispanic or Latino:		
Mexican	312	82.5
Puerto Rican	4	1.1
Cuban	0	0.0
All Other Hispanic or Latino	62	16.4
Total	378	100.0

Claritas, Inc. (2005)

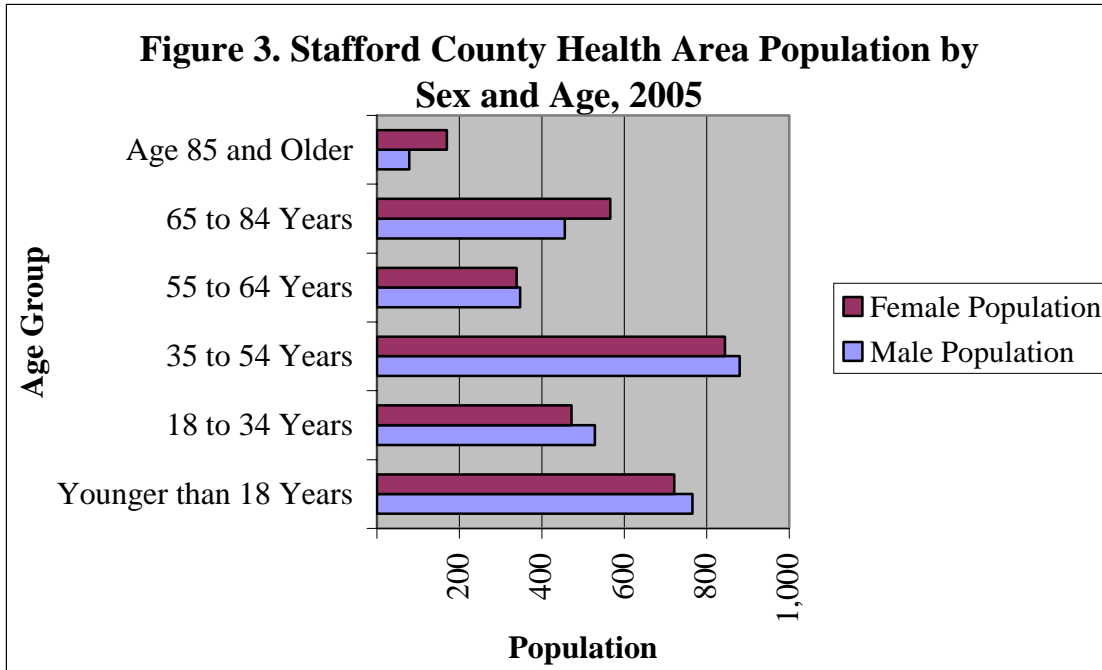


Claritas, Inc. (2005)

Table 4. Hispanic or Latino Population Projections for Stafford County

	2000	2005	2010
Population	6476	6167	5839
Number	301	378	438
Percentage	4.65%	6.13%	7.50%

Claritas, Inc. (2005)

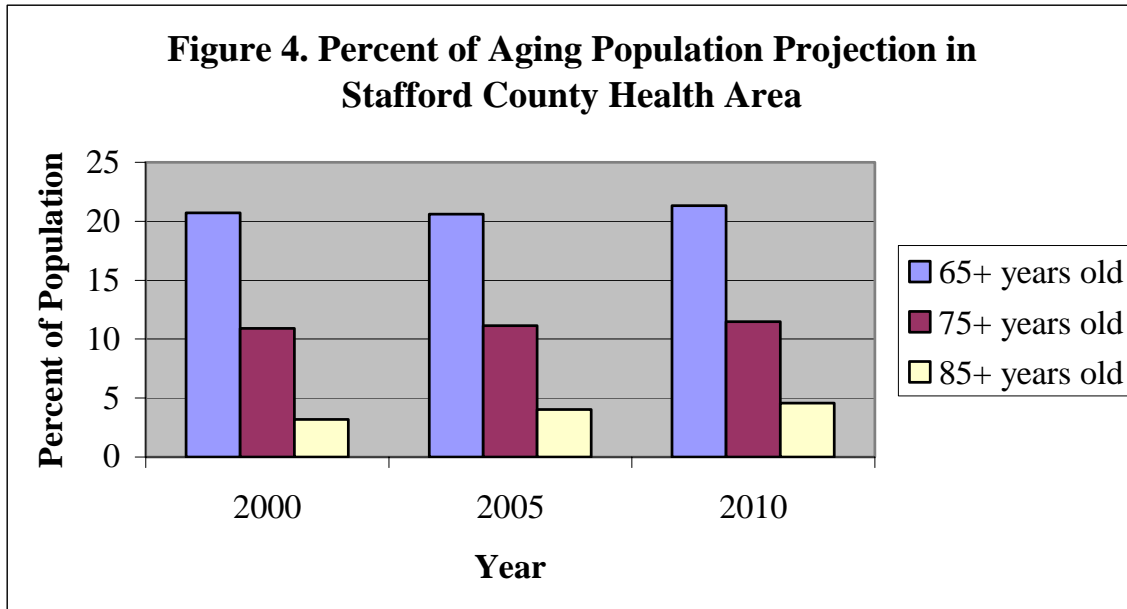


Claritas, Inc. (2005)

Table 5. Aging Population Projections for Stafford County Health Area

	2000		2005		2010	
	Percent	Number	Percent	Number	Percent	Number
65+ years old	20.71	1,341	20.59	1,270	21.32	1,245
75+ years old	10.91	706	11.14	687	11.49	671
85+ years old	3.17	205	4.02	248	4.56	266

Claritas, Inc. (2005)



Claritas, Inc. (2005)

Table 6. Estimated Population Age 15+ by Marital Status, 2005

	Stafford Area	Percent
Never Married	863	17.2
Married, Spouse present	3,089	61.5
Married, Spouse absent	143	2.9
Widowed	490	9.8
Divorced	440	8.8
Males, Never Married	523	10.4
Previously Married	305	6.1
Females, Never Married	340	6.8
Previously Married	671	13.4
Total	5,025	136.9

Claritas, Inc (2005)

Table 7. Estimated Population Age 25+ by Educational Attainment, 2005

	Stafford Area	Percent
Less than 9th grade	224	5.4
Some High School, no diploma	505	12.2
High School Graduate (or GED)	1,252	30.2
Some College, no degree	1,126	27.2
Associate Degree	327	7.9
Bachelor's Degree	536	12.9
Master's Degree	147	3.5
Professional School Degree	29	0.7
Doctorate Degree	2	0.1
Total	4,148	100.0

Claritas, Inc (2005)

Table 8. Estimated Households by Household Income, 2005

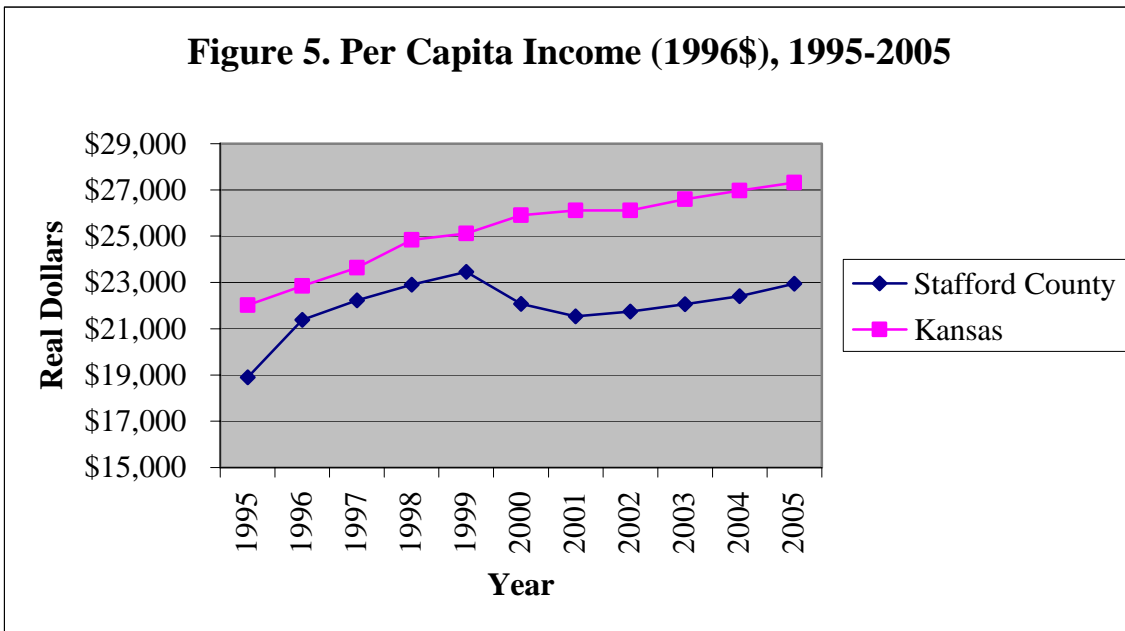
	Stafford Area	Percent
Income Less than \$15,000	460	17.9
Income \$15,000 - \$24,999	409	15.9
Income \$25,000 - \$34,999	434	16.9
Income \$35,000 - \$49,999	538	21.0
Income \$50,000 - \$74,999	445	17.3
Income \$75,000 - \$99,999	171	6.7
Income \$100,000 - \$149,999	83	3.2
Income \$150,000 - \$249,999	20	0.8
Income \$250,000 - \$499,999	4	0.2
Income \$500,000 and more	2	0.1
Total Estimated Households	2,566	100.0
2005 Est. Average Household Income		\$41,458
2005 Est. Median Household Income		\$34,529
2005 Est. Per Capita Income		\$17,471

Claritas, Inc (2005)

Table 9. Estimated All Owner-Occupied Housing Values, 2005

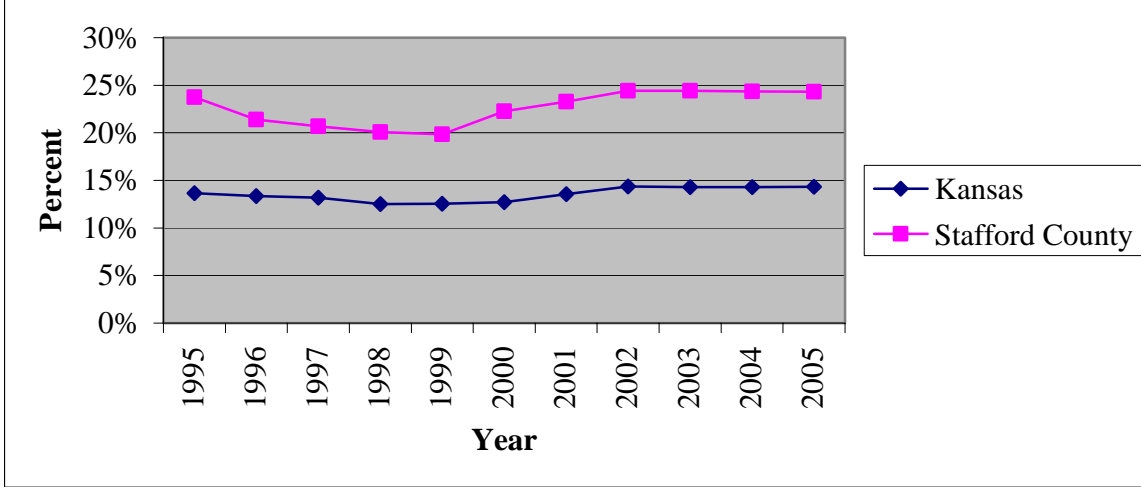
	Stafford Area	Percent
Value Less than \$20,000	458	22.7
Value \$20,000 - \$39,999	448	22.2
Value \$40,000 - \$59,999	334	16.5
Value \$60,000 - \$79,999	269	13.3
Value \$80,000 - \$99,999	180	8.9
Value \$100,000 - \$149,999	236	11.7
Value \$150,000 - \$199,999	44	2.2
Value \$200,000 - \$299,999	30	1.5
Value \$300,000 - \$399,999	11	0.5
Value \$400,000 - \$499,999	4	0.2
Value \$500,000 - \$749,999	7	0.4
Value \$750,000 - \$999,999	0	0.0
Value \$1,000,000 or more	0	0.0
Total	2,021	100.0

Claritas, Inc (2005)



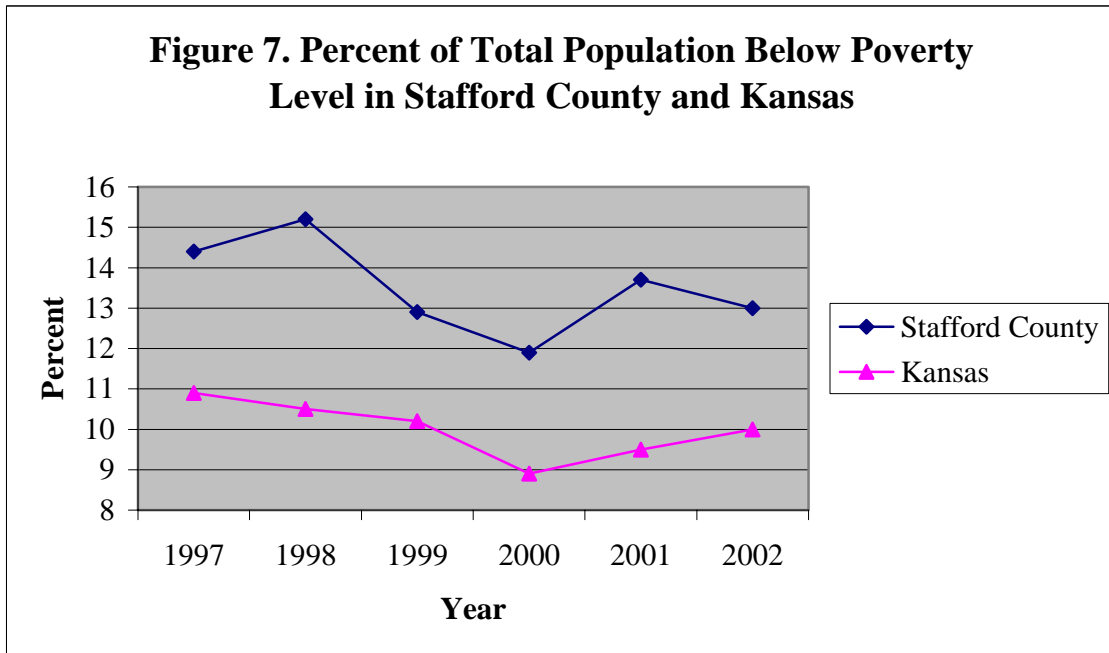
Woods and Poole, Inc. (2005)

Figure 6. Transfer Payments as Percent of Personal Income



Woods and Poole, Inc. (2005)

Figure 7. Percent of Total Population Below Poverty Level in Stafford County and Kansas



Kansas Statistical Abstract (2005)

Table 10. Stafford County Personal Income by Major Source

	1995	1996	1997	1998	1999	2000	2001	2002	2003	2004	2005
Total Earnings (Millions 1996\$)	\$50.26	\$60.52	\$62.44	\$64.12	\$65.99	\$54.67	\$52.30	\$51.06	\$51.89	\$52.80	\$53.69
Farm Earnings	\$10.71	\$19.76	\$18.60	\$19.88	\$23.14	\$12.36	\$11.62	\$10.63	\$11.60	\$11.84	\$12.08
Agriculture Services, Other	\$1.01	\$1.12	\$1.29	\$1.58	\$1.88	\$1.96	\$1.96	\$2.00	\$2.12	\$2.17	\$2.22
Mining	\$2.05	\$2.81	\$3.35	\$2.56	\$2.95	\$5.89	\$6.05	\$5.58	\$3.74	\$3.78	\$3.82
Construction	\$1.09	\$1.17	\$1.13	\$0.94	\$0.88	\$0.54	\$0.45	\$0.41	\$0.79	\$0.80	\$0.80
Manufacturing	\$1.86	\$1.56	\$1.49	\$1.76	\$1.69	\$1.52	\$1.36	\$1.29	\$1.31	\$1.33	\$1.35
Transport, Comm. & Public Utility	\$3.83	\$3.75	\$5.48	\$5.16	\$4.30	\$4.02	\$3.38	\$2.92	\$2.98	\$3.02	\$3.06
Wholesale Trade	\$2.48	\$2.63	\$2.54	\$2.57	\$2.57	\$2.44	\$2.05	\$1.77	\$1.81	\$1.83	\$1.85
Retail Trade	\$3.10	\$3.30	\$3.33	\$3.55	\$3.07	\$1.76	\$1.48	\$1.42	\$2.31	\$2.33	\$2.32
Finance, Ins. & Real Estate	\$2.57	\$2.74	\$3.04	\$3.24	\$3.08	\$2.70	\$2.68	\$3.14	\$3.21	\$3.27	\$3.33
Services	\$7.36	\$7.31	\$7.82	\$8.44	\$7.68	\$6.37	\$5.80	\$6.11	\$6.17	\$6.25	\$6.32
Federal Civilian Govt.	\$1.77	\$1.71	\$1.82	\$1.70	\$1.72	\$1.89	\$1.96	\$2.17	\$1.82	\$1.82	\$1.82
Federal Military Govt.	\$0.33	\$0.33	\$0.31	\$0.31	\$0.31	\$0.32	\$0.29	\$0.19	\$0.25	\$0.25	\$0.26
State and Local Govt.	\$12.11	\$12.35	\$12.24	\$12.44	\$12.73	\$12.88	\$13.23	\$13.42	\$13.78	\$14.12	\$14.46
Personal Income (Millions 1996\$)	\$96.67	\$108.03	\$110.53	\$112.88	\$114.13	\$105.23	\$102.05	\$101.44	\$101.26	\$102.40	\$103.53
Wages and Salaries	\$28.51	\$29.26	\$30.29	\$31.27	\$30.80	\$30.88	\$30.92	\$30.02	\$27.02	\$27.53	\$28.03
Other Labor Income	\$6.60	\$6.57	\$6.68	\$6.89	\$6.79	\$7.06	\$7.20	\$7.26	\$6.23	\$6.33	\$6.43
Proprietors Income	\$15.15	\$24.69	\$25.48	\$25.97	\$28.40	\$16.73	\$14.19	\$13.78	\$18.63	\$18.94	\$19.23
Dividends, Interest & Rent	\$25.34	\$25.88	\$26.53	\$26.92	\$25.70	\$26.65	\$24.52	\$24.14	\$23.96	\$24.02	\$24.08
Transfer Pmts. To Persons	\$22.96	\$23.10	\$22.86	\$22.65	\$22.66	\$23.43	\$23.77	\$24.76	\$24.72	\$24.94	\$25.16
Less Social Ins. Contributions	\$5.13	\$5.15	\$5.41	\$5.48	\$5.27	\$5.10	\$4.98	\$4.98	\$5.15	\$5.28	\$5.42
Residence Adjustment	\$3.25	\$3.68	\$4.11	\$4.66	\$5.05	\$5.57	\$6.45	\$6.46	\$5.84	\$5.93	\$6.02

Woods and Poole, Inc. (2005)

Historical employment, earnings, and income data through 2002 are from the U.S. Department of Commerce (USDoC); employment and earnings data by private non-farm SIC industry fro 2001 and 2002 are estimated from private non-farm NAICS industry data.

Table 11. Transfer Payments for Stafford County

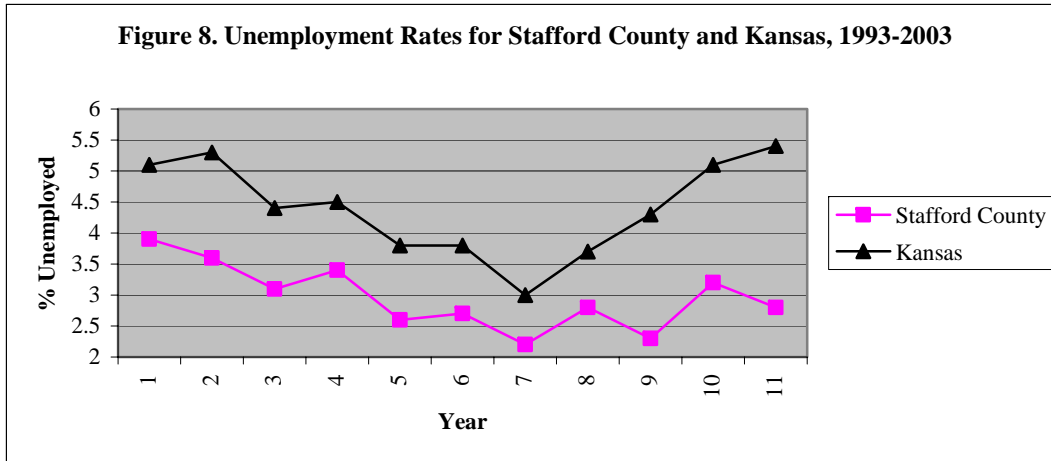
(Thousands of Dollars)	2001	2002	2003
Personal current transfer receipts (\$000)	26,002	27,241	26,875
Current transfer receipts of individuals from governments	24,649	26,109	25,807
Retirement and disability insurance benefits	11,724	11,945	12,016
Old-age, survivors, and disability insurance (OASDI) benefits	11,518	11,750	11,841
Railroad retirement and disability benefits	171	148	125
Workers' compensation	(L)	(L)	(L)
Other government retirement and disability insurance benefits 1/	(L)	(L)	(L)
Medical benefits	11,127	11,728	11,091
Medicare benefits	5,865	6,192	6,144
Public assistance medical care benefits 2/	5,208	5,449	4,890
Military medical insurance benefits 3/	54	87	57
Income maintenance benefits	1,194	1,412	1,675
Supplemental security income (SSI) benefits	204	224	220
Family assistance 4/	135	153	170
Food stamps	196	249	301
Other income maintenance benefits 5/	659	786	984
Unemployment insurance compensation	336	676	659
State unemployment insurance compensation	330	667	646
Unemployment compensation for Fed. civilian employees (UCFE)	(L)	(L)	(L)
Unemployment compensation for railroad employees	0	0	0
Unemployment compensation for veterans (UCX)	(L)	(L)	(L)
Other unemployment compensation 6/	0	0	0
Veterans benefits	186	291	321
Veterans pension and disability benefits	178	278	318
Veterans readjustment benefits 7/	(L)	(L)	(L)
Veterans life insurance benefits	0	0	0
Other assistance to veterans 8/	0	0	0
Federal education and training assistance	59	(L)	(L)
Other transfer receipts of individuals from governments 10/	(L)	(L)	(L)
Current transfer receipts of nonprofit institutions	759	752	777
Receipts from the Federal government	139	150	165
Receipts from state and local governments 11/	430	433	444
Receipts from businesses	190	169	168
Current transfer receipts of individuals from businesses 12/	594	380	291

Bureau of Economic Analysis (2005)

Notes for Table 11:

1. Consists largely of temporary disability payments and black lung payments.
 2. Consists of medicaid and other medical vendor payments.
 3. Consists of payments made under the TriCare Management Program (formerly called CHAMPUS) for the medical care of dependents of active duty military personnel and of retired military personnel and their dependents at nonmilitary medical facilities.
 4. Through 1995, consists of emergency assistance and aid to families with dependent children. For 1998 forward, consists of benefits—generally known as temporary assistance for needy families—provided under the Personal Responsibility and Work Opportunity Reconciliation Act of 1996. For 1996–97, consists of payments under all three of these programs.
 5. Consists largely of general assistance, refugee assistance, foster home care and adoption assistance, earned income tax credits, and energy assistance.
 6. Consists of trade readjustment allowance payments, Redwood Park benefit payments, public service employment benefit payments, and transitional benefit payments.
 7. Consists largely of veterans' readjustment benefit payments, educational assistance to spouses and children of disabled or deceased veterans, payments to paraplegics, and payments for autos and conveyances for disabled veterans.
 8. Consists of State and local government payments to veterans.
 9. Consists largely of federal fellowship payments (National Science Foundation fellowships and traineeships, subsistence payments to State maritime academy cadets, and other federal fellowships), interest subsidy on higher education loans, basic educational opportunity grants, and Job Corps payments.
 10. Consists largely of Bureau of Indian Affairs payments, education exchange payments, Alaska Permanent Fund dividend payments, compensation of survivors of public safety officers, compensation of victims of crime, disaster relief payments, compensation for Japanese internment, and other special payments to individuals.
 11. Consists of State and local government educational assistance payments to nonprofit institutions, and other State and local government payments to nonprofit institutions.
 12. Consists largely of personal injury payments to individuals other than employees and other business transfer payments.
- All state and local area dollar estimates are in current dollars (not adjusted for inflation).
 - (L) Less than \$50,000, but the estimates for this item are included in the totals.
 - (N) Data not available for this year.

Figure 8. Unemployment Rates for Stafford County and Kansas, 1993-2003



Kansas Statistical Abstract (2005)

Table 12. Employment by Major Industry for Stafford County

	1995	1996	1997	1998	1999	2000	2001	2002	2003	2004	2005
Total Employment (Thousands)	3.06	3.10	3.18	3.22	3.13	3.14	2.98	2.90	2.92	2.94	2.97
Farm Employment	0.66	0.69	0.69	0.70	0.70	0.68	0.67	0.66	0.66	0.66	0.65
Agricultural Services, Other	0.11	0.13	0.14	0.14	0.17	0.17	0.17	0.18	0.18	0.18	0.19
Mining	0.26	0.22	0.25	0.23	0.24	0.22	0.19	0.19	0.19	0.19	0.19
Construction	0.07	0.08	0.08	0.07	0.07	0.07	0.06	0.06	0.06	0.06	0.06
Manufacturing	0.08	0.08	0.07	0.09	0.08	0.07	0.06	0.06	0.06	0.06	0.06
Transport, Comm. & Public Utility	0.10	0.09	0.09	0.08	0.06	0.07	0.06	0.06	0.06	0.06	0.06
Wholesale Trade	0.08	0.09	0.10	0.11	0.12	0.11	0.09	0.08	0.08	0.08	0.08
Retail Trade	0.33	0.35	0.35	0.35	0.31	0.31	0.27	0.25	0.25	0.25	0.26
Finance, Ins. & Real Estate	0.14	0.16	0.19	0.21	0.19	0.19	0.18	0.20	0.20	0.20	0.20
Services	0.56	0.54	0.53	0.53	0.50	0.49	0.44	0.44	0.45	0.45	0.45
Federal Civilian Govt.	0.04	0.04	0.04	0.04	0.04	0.05	0.04	0.04	0.04	0.04	0.04
Federal Military Govt.	0.03	0.03	0.03	0.02	0.02	0.02	0.02	0.01	0.01	0.01	0.01
State and Local Govt.	0.60	0.62	0.63	0.66	0.64	0.70	0.73	0.68	0.70	0.71	0.72

Woods and Poole, Inc (2005)

Employment in number of jobs includes proprietors and part-time jobs.

Health and Behavioral Data

Table 13. Persons Served by State/Medicaid Funded Services

Major Services [2]	Persons Served [1]		
	FY 2002	FY 2003	FY 2004
Temporary Assistance for Families	46	60	57
% Total Population	1.0%	1.3%	1.2%
Employment Preparation Services	36	34	35
% Total Population	0.8%	0.7%	0.8%
Child Care Assistance	46	51	38
% Total Population	1.0%	1.1%	0.8%
Food Assistance	320	397	376
% Total Population	6.9%	8.7%	8.2%
Energy Assistance *	161	177	223
% Total Population	3.5%	3.9%	4.9%
General Assistance	2	5	5
% Total Population	0.0%	0.1%	0.1%
Vocational Rehabilitation Services	10	11	8
% Total Population	0.2%	0.2%	0.2%
Family Preservation *	4	4	1
% Total Population	0.1%	0.1%	0.0%
Reintegration/Foster Care	9	6	10
% Total Population	0.2%	0.1%	0.2%
Adoption Support	0	1	1
% Total Population	0.0%	0.0%	0.0%
Health Care Total	717	760	776
% Total Population	15.4%	16.6%	17.0%
Health Care Populations			
Families	521	546	555
Elderly and Disabled	194	195	202
Child Welfare	18	17	15
Other	6	2	4
Pharmacy	451	468	467
Inpatient	65	75	80
Managed Care	461	496	473
Rehabilitation Services	47	45	45
Community Mental Health Center	55	52	50
Physician	381	376	346
Other	0	0	0
Medicaid Funded Community Based Services	41	42	44
% Total Population	0.9%	0.9%	1.0%
Institutional Services	58	40	44
% Total Population	1.2%	0.9%	1.0%

Kansas Department of Social Rehabilitative Services (2004)

1. All persons served represents the average monthly persons served per year. The exceptions are asterisked. The unit of service for energy assistance is the annual households served and the unit of service for family preservation is the number of families referred. 2. This is not an exhaustive listing of all programs within SRS. This listing does not include grants. 3. This total excludes expenditures from programs not listed.

Table 14. Stafford County Nursing Home Beds, Occupancy

	2001	2002	2003
Nursing Home	Stafford	Stafford	Stafford
Beds	75	79	82
Occupancy	68	69	67
Average Occupancy Rate	91.31%	87.75%	81.31%

Kansas Department on Aging

Occupancy Data for July-December of each year

Table 15. Child Abuse and Juvenile Crime

	Stafford	State
Substantiated Child Abuse and Neglect	10	7,024
Cases per 1,000 children 17 and under (2003)	9	10.1
Annual Average Rate 1998-2002	14.9	11.3
Percent Change	-39.7	-10.6
Juvenile Court Filings (through June 2004)	19	14,719
Rate per 1,000 children under 17	17	21.2
Annual Average Rate 1998-2002	17.3	23.3
Percent Change	-1.5	-9

Kansas KIDSCount (2005)

Table 16. Low Birth Weight, Infant Mortality, Births to Underage Mothers, etc.

Births to School-Aged Mothers (2003)	Stafford	State
Number	1	1,214
Rate per 1,000 school-aged females	3.3	7.8
Annual Average Rate 1998-2002	9.1	9.2
Percent Change	-64	-15.2
Infant Mortalities		
Number	0	262
Rate per 1,000	0	6.7
Annual Average Rate 1998-2002	10.9	7.1
Percent Change	-100	-15.2
Childhood Deaths		
Number	0	126
Rate per 100,000 children 14 and younger	0	23.5
Annual Average Rate 1998-2002	21	25.6
Percent Change	-100	-82
Low Birth Weight Babies		
Number	2	2,902
Rate (percent of live births)	4.3	7.4
Annual Average Rate 1998-2002	1.05	7
Percent Change	-59.6	5.7

Kansas KIDSCount (2005)

Table 17. Maternity Statistics

	Stafford	State
Births by Age of Mother (2003)		
Less than 20 years	4	4,097
20-24 years	18	11,066
25-29	13	11,102
30-34	7	8,641
35 and older	5	4,440
Births by Mother's Race (2003)		
White	47	34,801
Black	0	2,753
Other Non-White	0	1,716
Not Specified	0	83
KDHE Annual Summary of Vital Statistics (2003)		
Births to Mothers with Less than High School Degree		
Number	13	7,185
Rate (percent of live births)	27.7	18.5
Annual Average Rate 1998-2002	21.8	18.6
Percent change	26.8	-0.5
Births with Adequate or Better Prenatal Care		
Number	36	31,539
Rate (percent)	78.3	81.2
Annual Average Rate 1998-2002	75.4	80.8
Percent change	3.8	0.5

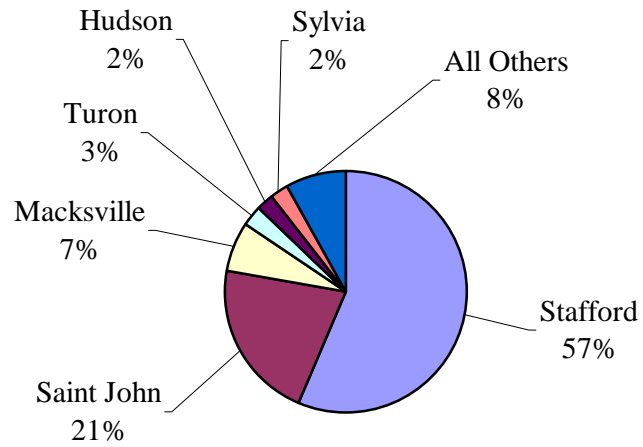
Kansas KIDSCount (2005)

Table 18. Stafford District Hospital Data

	Stafford	State
Licensed Acute Beds	25	13,739
Staffed Beds	25	10,008
Staffed Beds Nursing Home Unit	0	1,845
Admissions		
Hospital	136	347,027
Nursing Home Unit	0	4,749
Swing Beds	47	10,719
Emergency Room Visits	657	958,033
Outpatient Visits	7,013	6,286,216
Inpatient Surgical Operations	0	97,709
Outpatient Surgical Operations	25	179,985
Medicare Discharges		
Hospital	114	150,521
Nursing Home Unit	0	3,035
Medicare Inpatient Days		
Hospital	511	858,611
Nursing Home Unit	0	34,319
Medicaid Discharges		
Hospital	4	41,905
Nursing Home Unit	0	367
Medicaid Inpatient Days		
Hospital	7	460,090
Nursing Home Unit	0	203,233

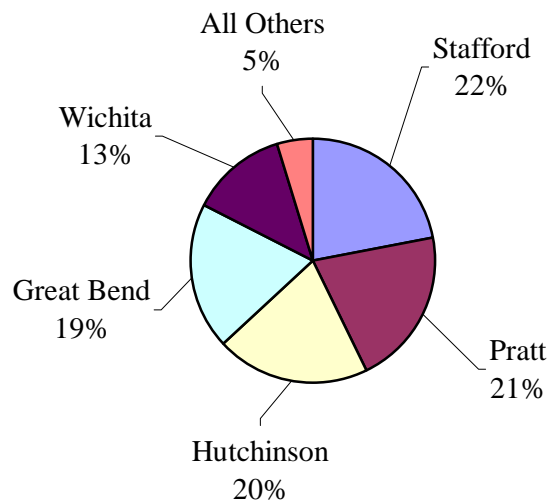
Kansas Hospital Association STAT Book (2004)

Figure 9. Stafford County District Hospital Visits by Patient Origin, March 2003-October 2004



Kansas Hospital Association (2004)

Figure 10. Hospital Visits by Patient Destination for Stafford County, March 2003-October 2004



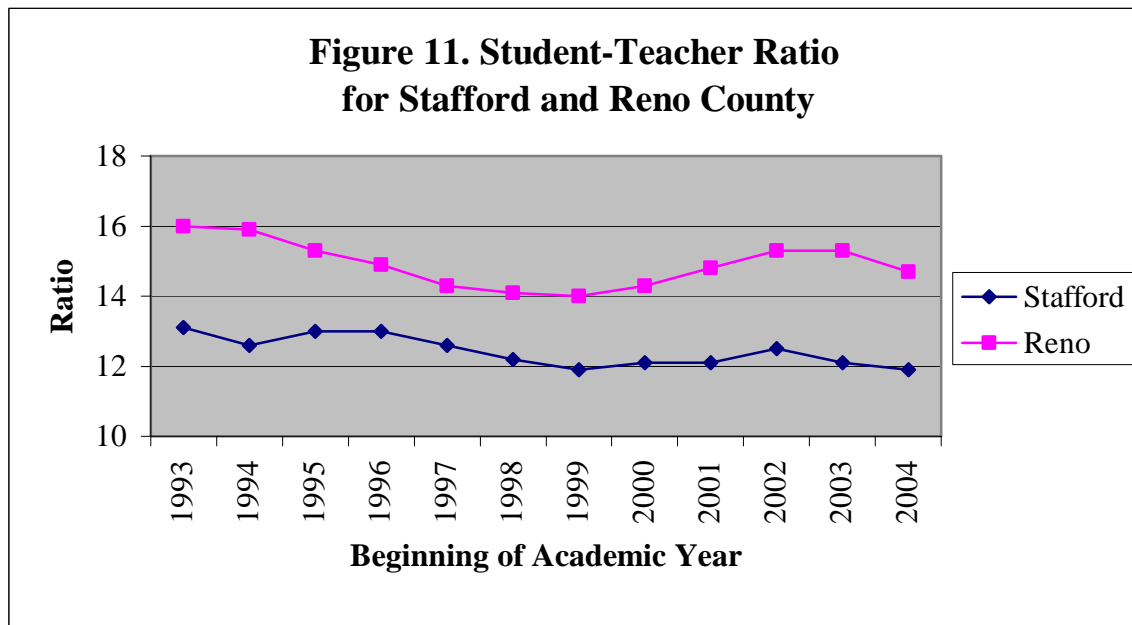
Kansas Hospital Association (2004)

Education

Table 19. Stafford County Health Area School Districts

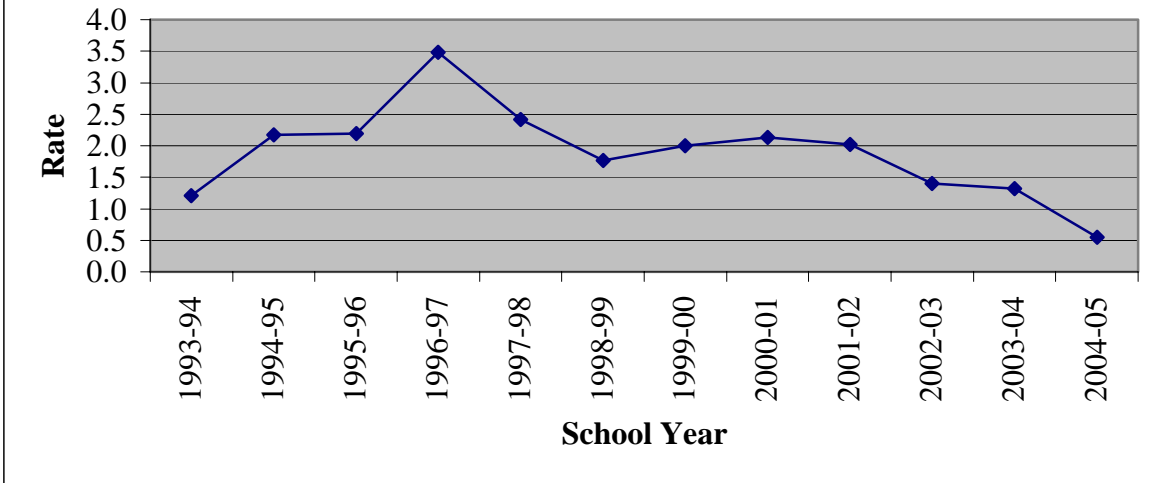
School District	County
USD 351 Macksville	Stafford
USD 350 St. John-Hudson	Stafford
USD 349 Stafford	Stafford
USD 310 Fairfield	Reno

Kansas Department of Education (2005)



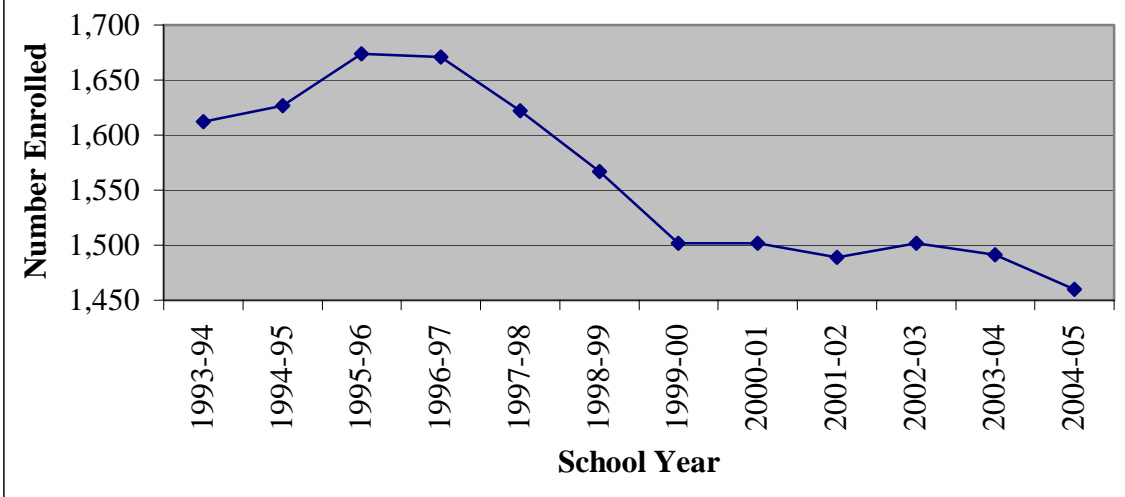
Kansas Statistical Abstract (2005)

Figure 12. Dropout Rates for Stafford County Health Area Schools



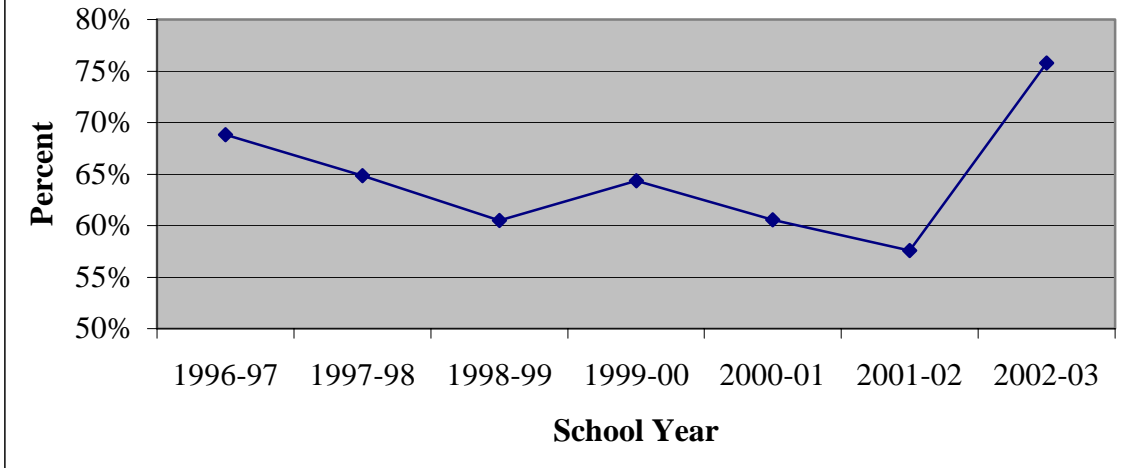
Kansas Department of Education (2005)

Figure 13. Total Enrollment for Stafford County Health Area Schools



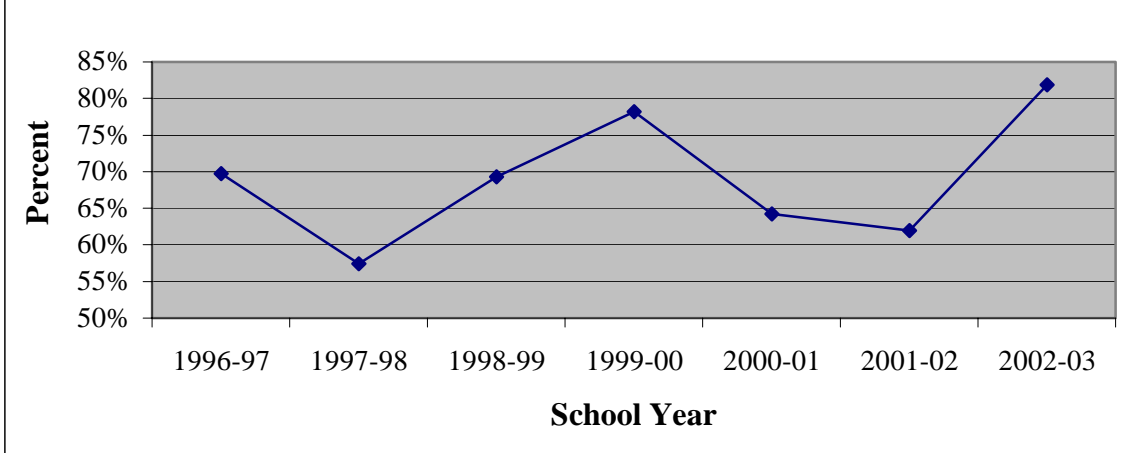
Kansas Department of Education (2005)

Figure 14. Percent of Total Graduates Passing At Least One Advanced Math Course

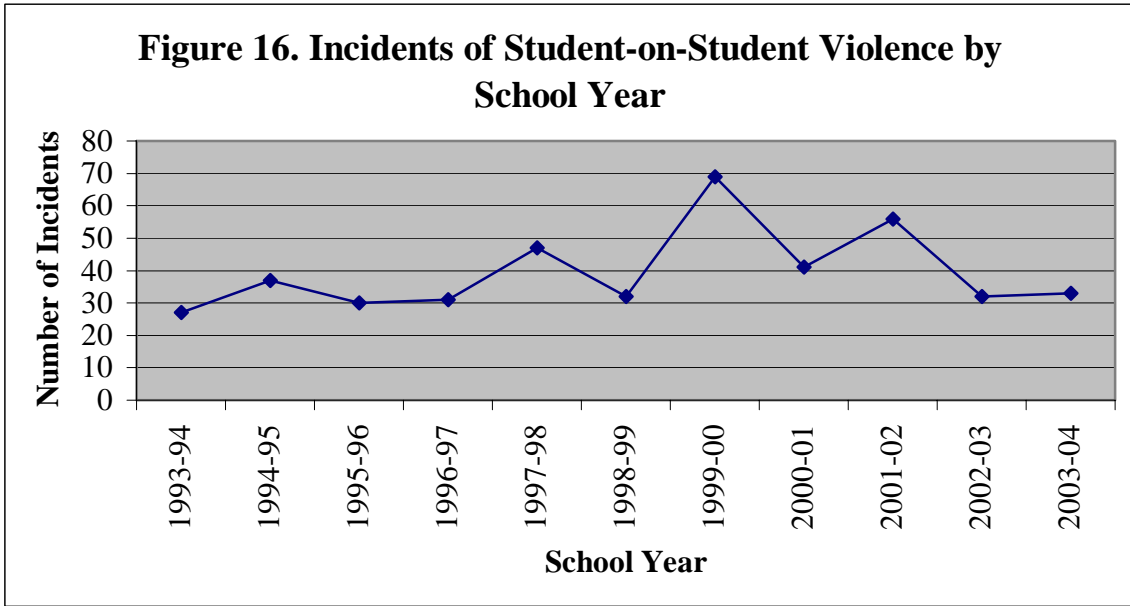


Kansas Department of Education (2005)

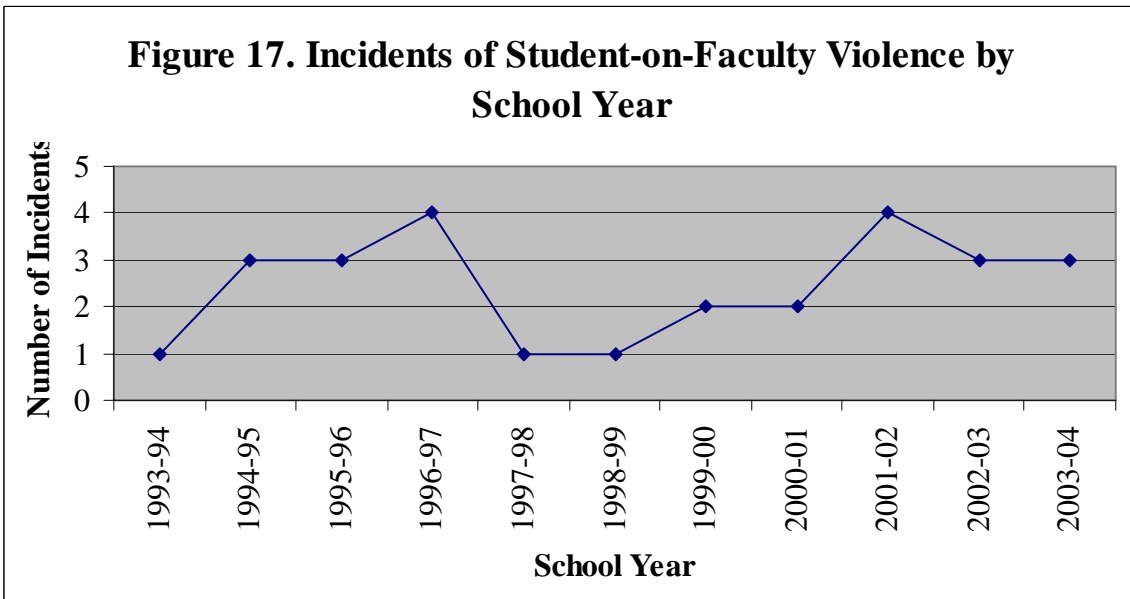
Figure 15. Percent of Total Graduates Passing At Least One Advanced Science Course



Kansas Department of Education (2005)



Kansas Department of Education (2005)



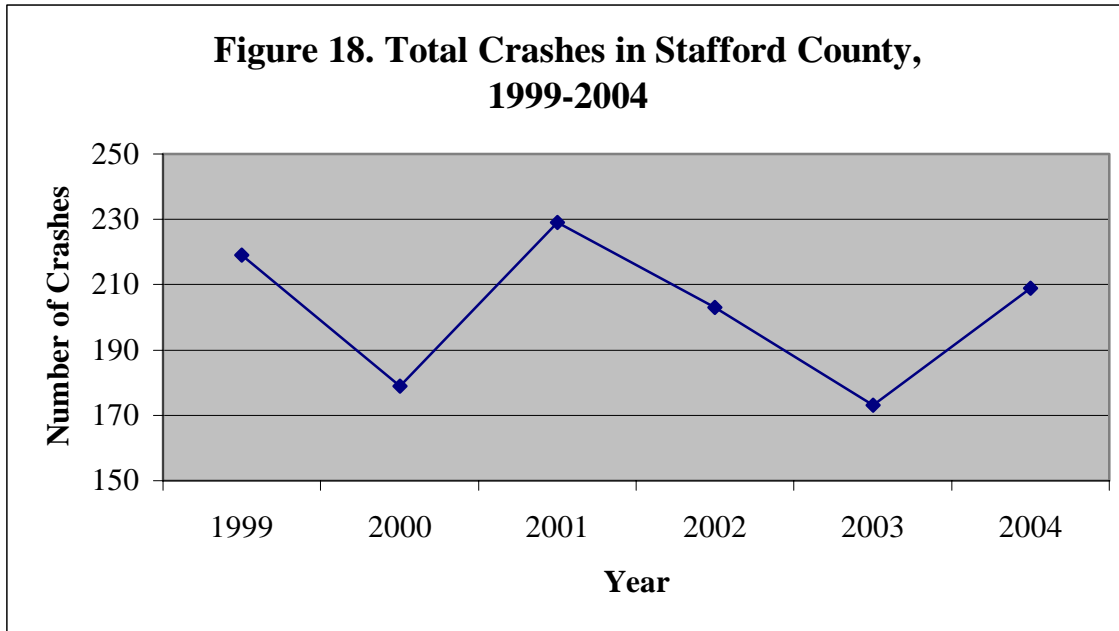
Kansas Department of Education (2005)

Traffic

Table 20. Traffic Accident Facts

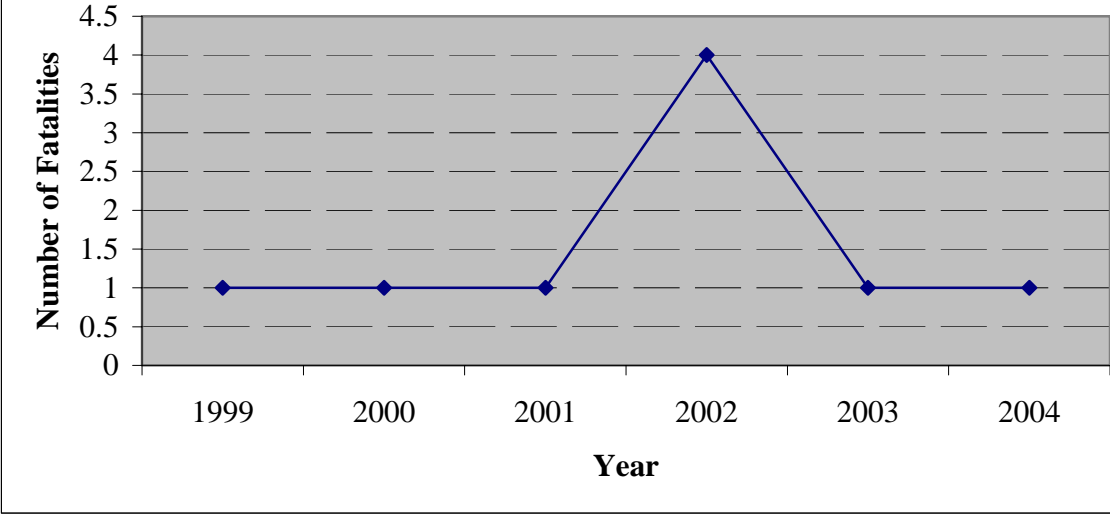
	Stafford	Rate per 1,000 Population	
		Stafford	State
Accidents			
Total	173	37.7	35.7
Fatal Accidents	1	0.2	0.2
Injury Accidents	25	5.4	8.1
Property Damage Only	147	32.0	27.4
Deer Involved	96	20.9	4.3
Speed Related	11	2.4	4.0
Alcohol Related	2	0.4	1.6
People			
Deaths	1	0.2	0.2
Injuries	39	8.5	11.8
Pedestrians	2	0.4	0.4
% Restraint Use		82.5	83.7

2003 Kansas Traffic Accident Facts County Summaries



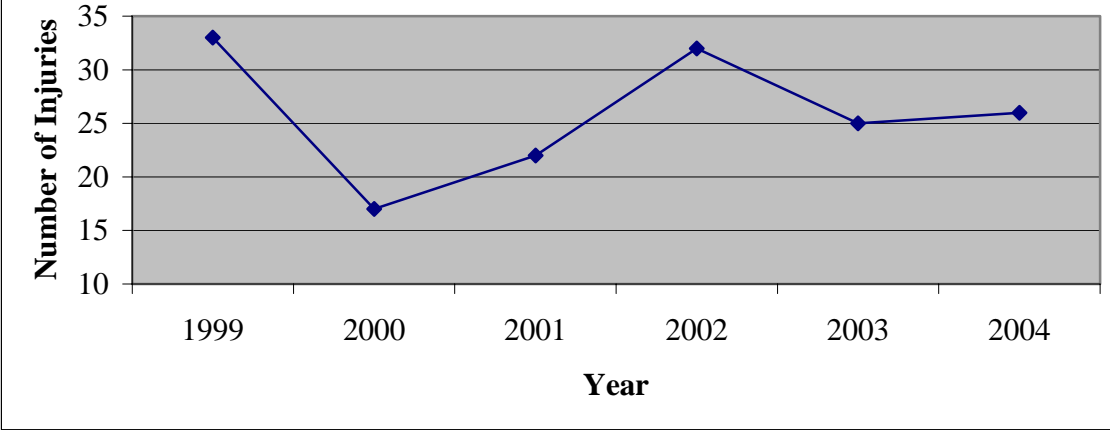
Kansas Traffic Facts (2004)

Figure 19. Crash Fatalities in Stafford County, 1999-2004



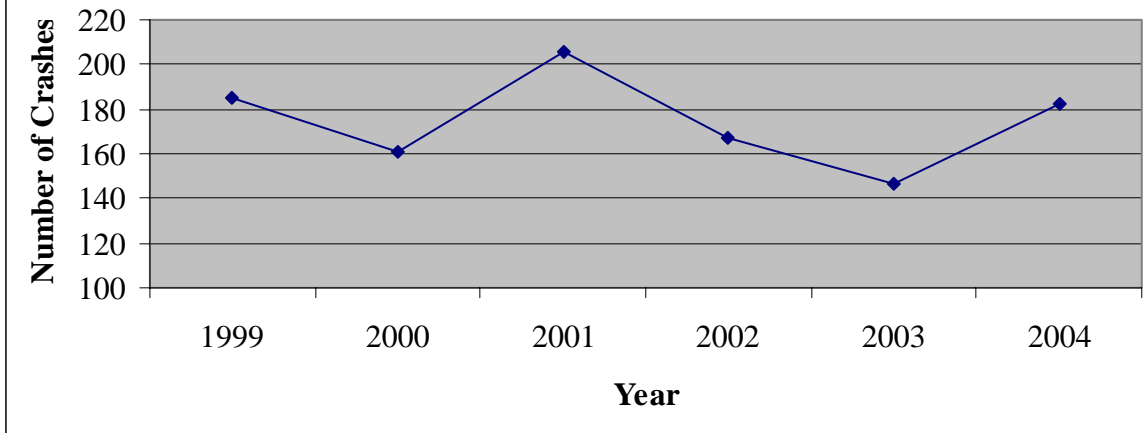
Kansas Traffic Facts (2004)

Figure 20. Crashes with Injury in Stafford County, 1999-2004



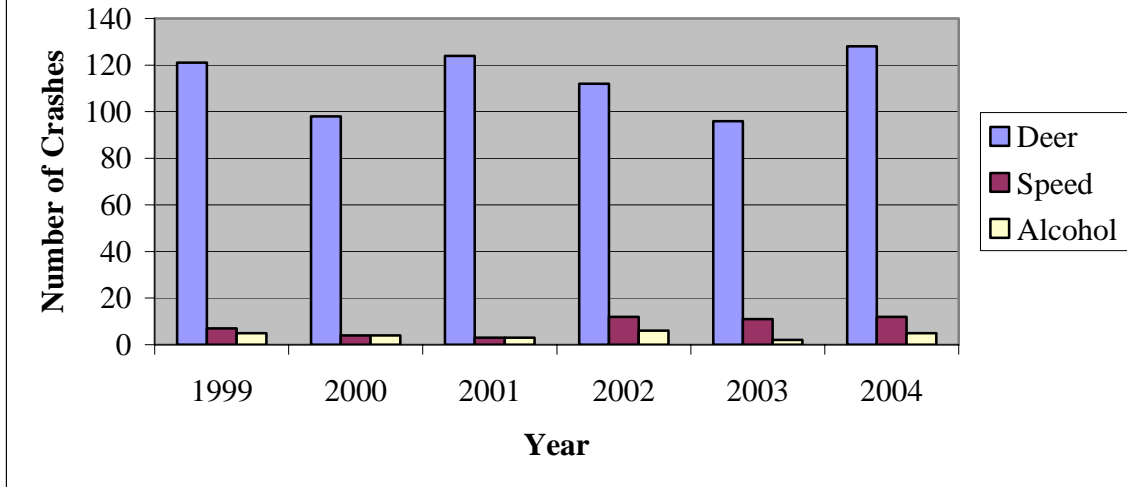
Kansas Traffic Facts (2004)

Figure 21. Total Number of Property Damage Only Crashes in Stafford County, 1999-2004



Kansas Traffic Facts (2004)

Figure 22. Crashes Resulting from Deer, Speed and Alcohol in Stafford County, 1999-2004



Kansas Traffic Facts (2004)

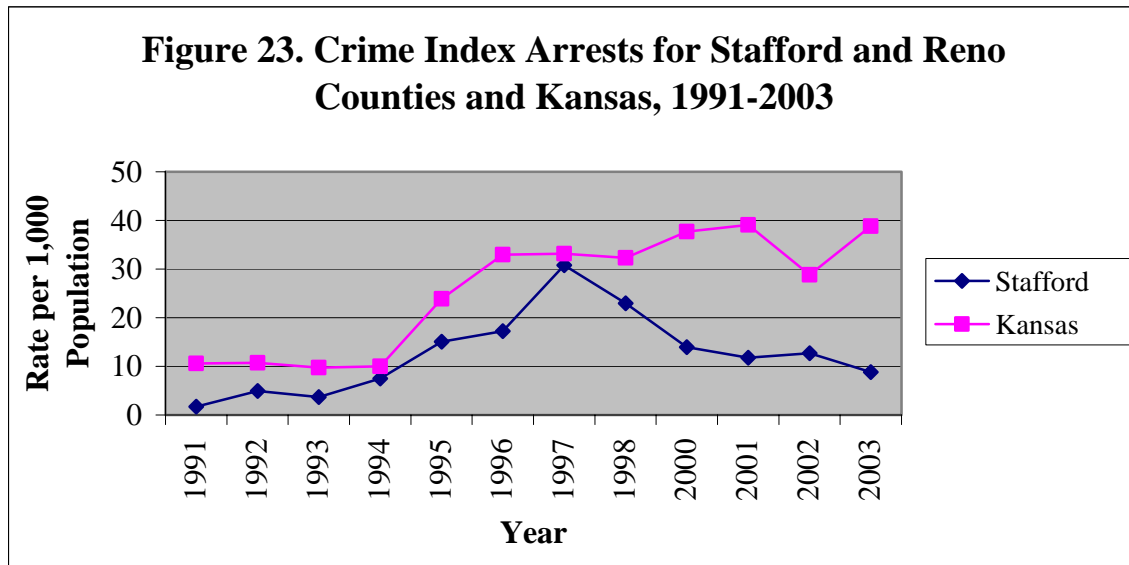
Crime

Table 21. Crime Statistics for Stafford County and Kansas

	2003					
	Crime Index Offenses		Violent Crime		Property Crime	
	Number	Rate Per 1,000	Number	Rate Per 1,000	Number	Rate Per 1,000
Stafford	96	20.5	4	0.9	92	19.7
State	116,818	42.9	10,136	3.7	106,682	39.1
	2004					
	Crime Index Offenses		Violent Crime		Property Crime	
	Number	Rate Per 1,000	Number	Rate Per 1,000	Number	Rate Per 1,000
Stafford	94	20.1	3	0.6	91	19.5
State	117,493	44.9	10,493	4.0	106,753	40.9

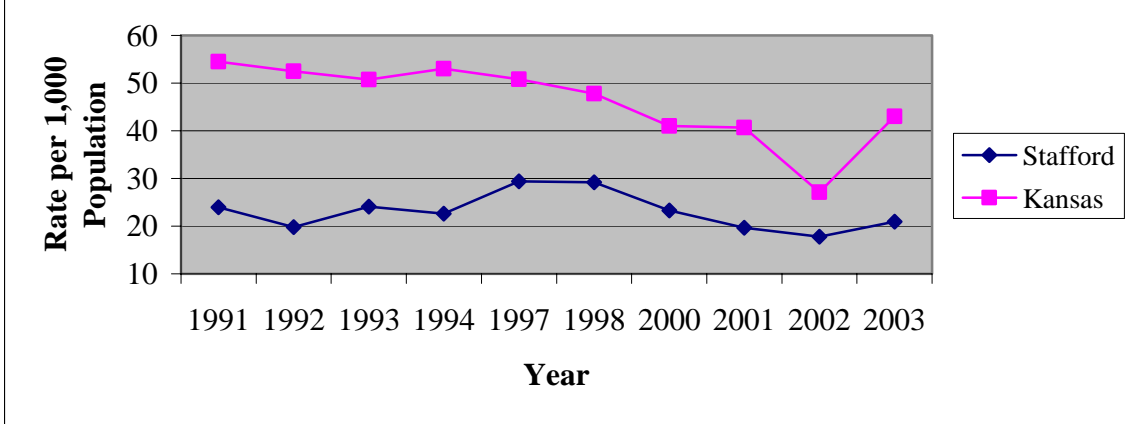
Kansas Statistical Abstract (2004)

Index crimes include murder, rape, robbery, aggravated assault, burglary, larceny, and motor vehicle theft.



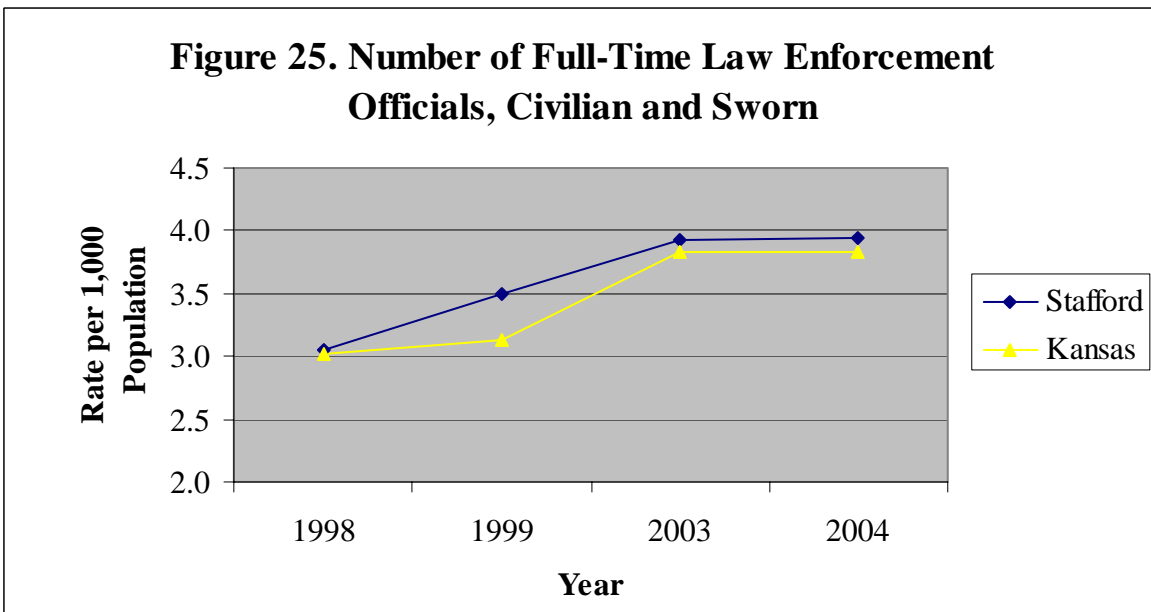
Kansas Statistical Abstract (2003) Index crimes include murder, rape, robbery, aggravated assault, burglary, larceny, and motor vehicle theft.

Figure 24. Crime Index Offenses for Stafford and Reno Counties and Kansas, 1991-2003



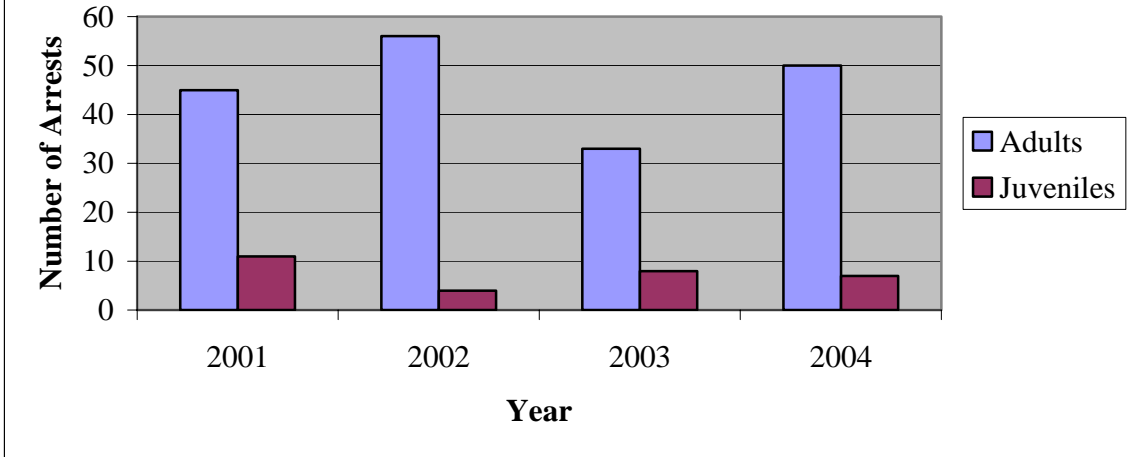
Kansas Statistical Abstract (2003) Index crimes include murder, rape, robbery, aggravated assault, burglary, larceny, and motor vehicle theft.

Figure 25. Number of Full-Time Law Enforcement Officials, Civilian and Sworn



Kansas Statistical Abstract (2004)

Figure 26. Number of Adult and Juvenile Arrests for Stafford County, 2001-2004



Kansas Statistical Abstract (2004)

Index

Arrests, 33, 35
Births, 19, 20
Child Abuse, 18
Crashes, 29, 30, 31
Crime, 14, 18, 33, 34
Dropouts, 25
Employment, 15
Hospital, 21, 22
Income, 9, 10, 12
Infant Mortality, 19
Medicaid, 17
Nursing Home, 18
Population, 5, 6, 7, 8
Poverty, 11
Transfer Payments, 11, 13
Unemployment, 15



**Kansas State University Agricultural Experiment Station and Cooperative Extension Service,
Manhattan, Kansas.**

It is the policy of Kansas State University Agricultural Experiment Station and Cooperative Extension Service that all persons shall have equal opportunity and access to its educational programs, services, activities, and materials without regard to race, color, religion, national origin, sex, age or disability. Kansas State University is an equal opportunity organization.

Issued in furtherance of Cooperative Extension Work, Acts of May 8 and June 30, 1914, as amended. Kansas State University, County Extension Councils, Extension Districts, and United States Department of Agriculture Cooperating, Fred A. Cholick, Dean, College of Agriculture.