

# Trego County Rural Health Works



Communities Building Affordable & Sustainable Healthcare Systems

## Traffic Data

### Introduction

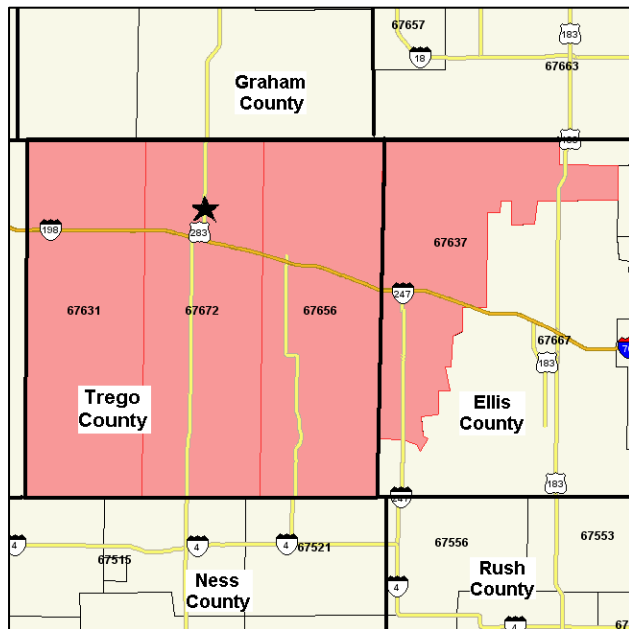
Kansas Rural Health Works (KRHW) is dedicated to helping rural communities build affordable and sustainable local health care systems. Health care is important to seniors, young families and companies. But rural health care systems are facing many challenges: hospitals are closing; services have been cut; doctors won't come to the area or they don't stay; Medicare and Medicaid payments are too low. Rural residents can revitalize their local health care system. KRHW provides the tools. Local visionary leadership puts these tools to work. KRHW helps communities keep health care dollars at home. Sponsored by the Kansas Rural Health Options Project with funding from the Office of Rural Health Policy, Health Resources and Services Administration.

### Traffic Data Summary

Following are a variety of data and statistics about traffic accidents in Trego County. The data is reported by county.

- The rate of traffic accidents in Trego County exceeds the rate for the state as a whole, with deer-vehicle collisions accounting for many of the accidents. Each year there are about 100 total vehicle crashes in Trego County.
- In 2007, the most recent year for which data were available, there were 16 accidents involving injury, but there were no fatalities. Among the reasons for injury and death is the failure to use seatbelts. In 25 percent of the incidents involving injury or death, vehicle occupants were not using seatbelts. This compares with about 20 percent for the state.
- While it may not be surprising that a large number of vehicle crashes involve collisions with deer, trends show that between five and 10 each year involve alcohol and between 10 and 20 involved excessive speed.

### Trego County Health Market Area



ZIP codes within the Trego County Health Area. Source: Claritas, Inc. 2008

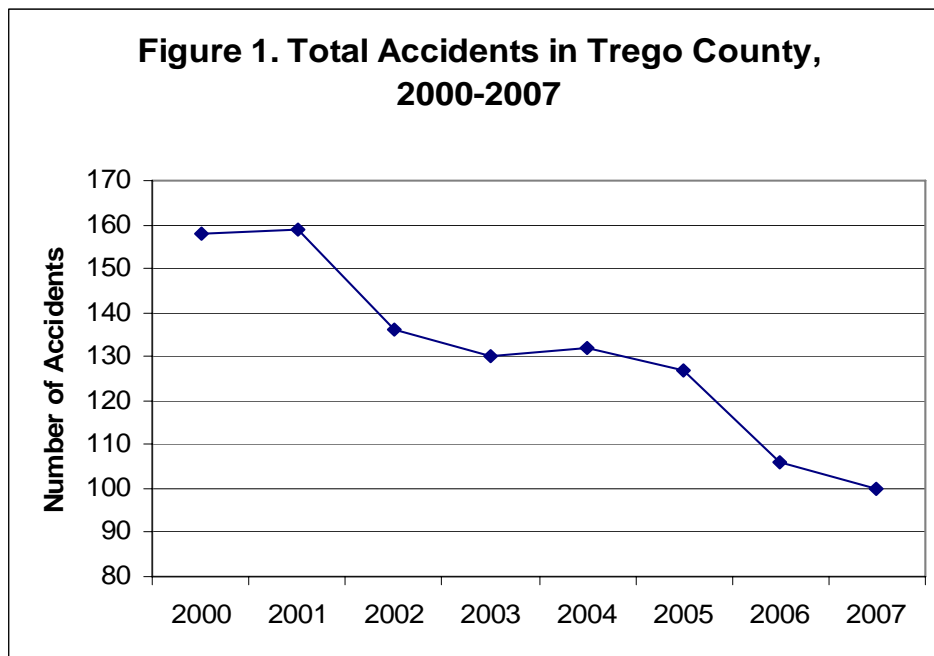
# Trego County Rural Health Works

The rate of traffic accidents in Trego County exceeds the rate for the state as a whole, with deer-vehicle collisions accounting for many of the accidents. Each year there are about 100 total vehicle crashes in Trego County. In 2007, the most recent year for which data were available, there were 16 accidents involving injury but, fortunately, there were no fatalities. Among the reasons for injury and death is the failure to use seatbelts. In 25 percent of the incidents involving injury or death, vehicle occupants were not using seatbelts.

**Table 1. 2007 Traffic Accident Facts for Trego County and Kansas**

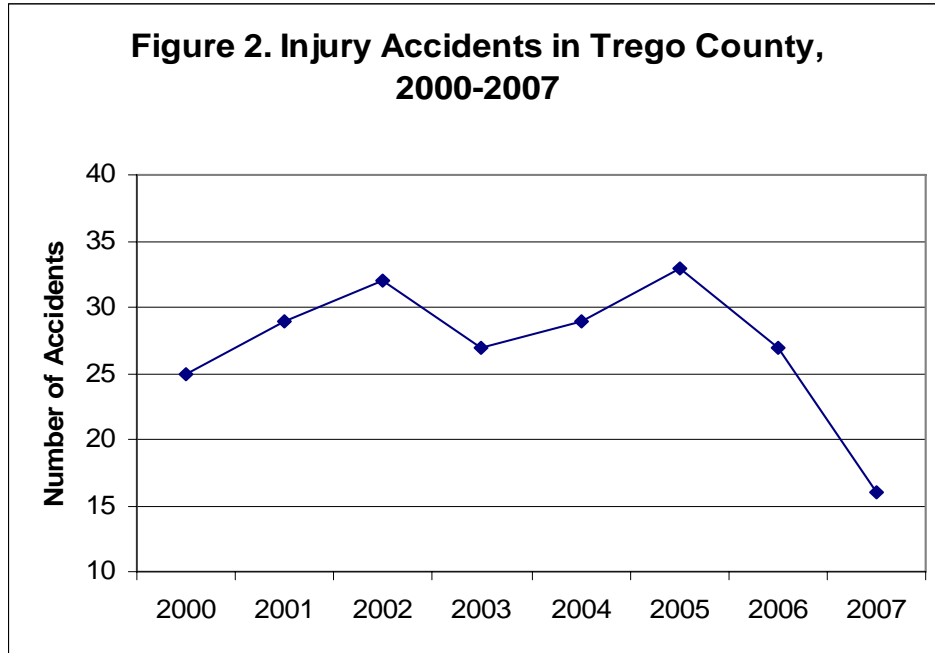
Accidents	Trego	Kansas	Rate per 1,000 Population	
			Trego	Kansas
Total	100	70,589	34.2	25.4
Fatal Accidents	0	379	-	0.1
Injury Accidents	16	16,228	5.5	5.8
Property Damage Only	84	53,982	28.7	19.4
Deer Involved	31	9,417	10.6	3.4
Speed Related	17	9,480	5.8	3.4
Alcohol Related	3	3,292	1.0	1.2
<b>People</b>				
Deaths	0	416	-	0.1
Injuries	27	22,904	9.2	8.3
% Restraint Use			75.1%	80.5%

Kansas Department of Transportation, 2007

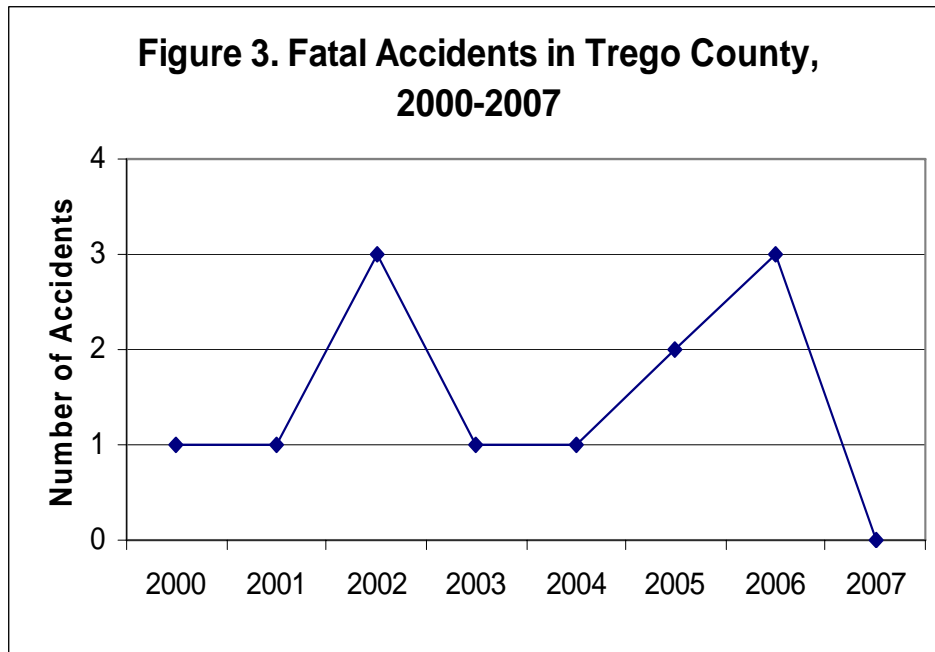


Kansas Department of Transportation, 2007

# Trego County Rural Health Works

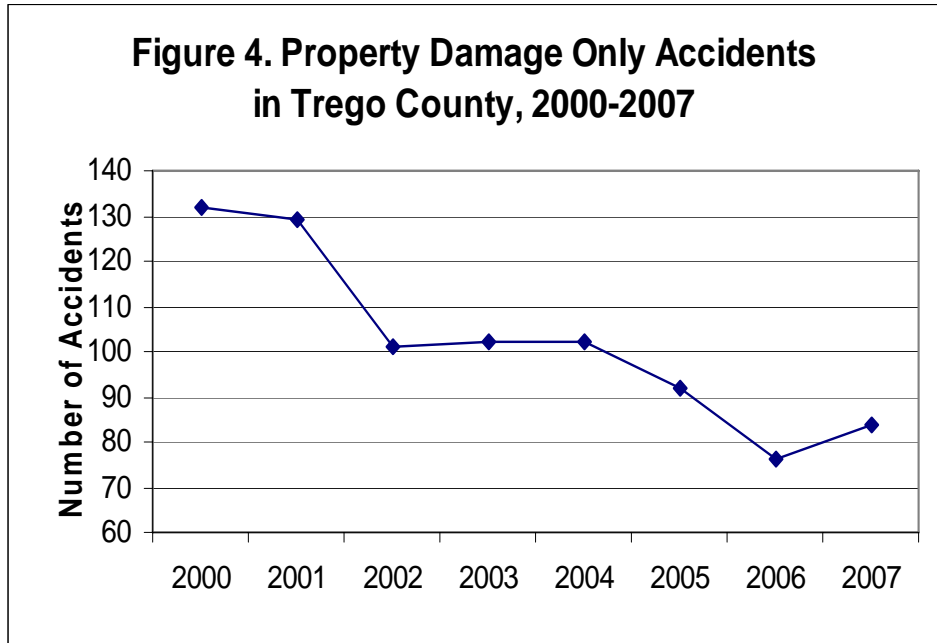


Kansas Department of Transportation, 2007

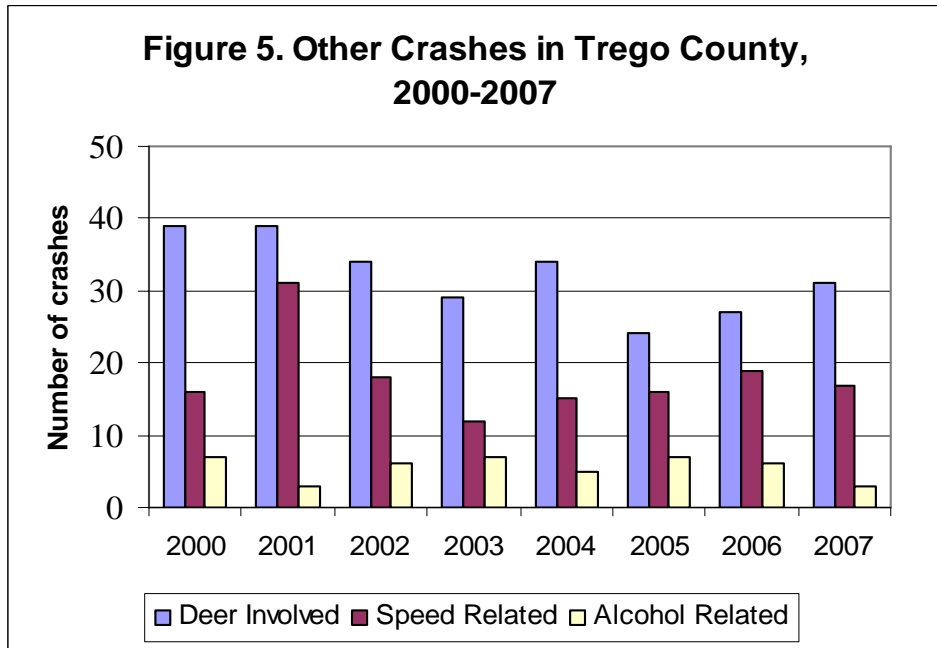


Kansas Department of Transportation, 2007

# Trego County Rural Health Works



Kansas Department of Transportation, 2007



Kansas Department of Transportation, 2007

This information was prepared by the Office of Local Government, K-State Research and Extension. For questions or other information, call 785-532-2643.